

P1. 538/P1. 86/P2/P2. 5/P3. 076

1280*1920mm Tri-fold Seamless Splicing LED Poster Display Series



High-Performance Foldable LED Advertising Display with Seamless Splicing





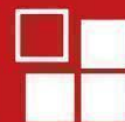
High-Efficient



Ultra slim



Seamless splicing



Quick installation

1280×1920mm Tri-fold LED Poster Display with
Seamless Splicing Series



Fold



Remote control

1

Tri-fold structure instantly transforms into a large screen when unfolded, while folding down to a compact size for easy transport and storage.

2

Easy to install and maintain: The module adopts magnetic pre maintenance, making installation convenient and fast

3

Display Excellence: LED advertising machines can dynamically display images and videos, vividly and interestingly convey advertising information, and attract the attention of a large audience

4

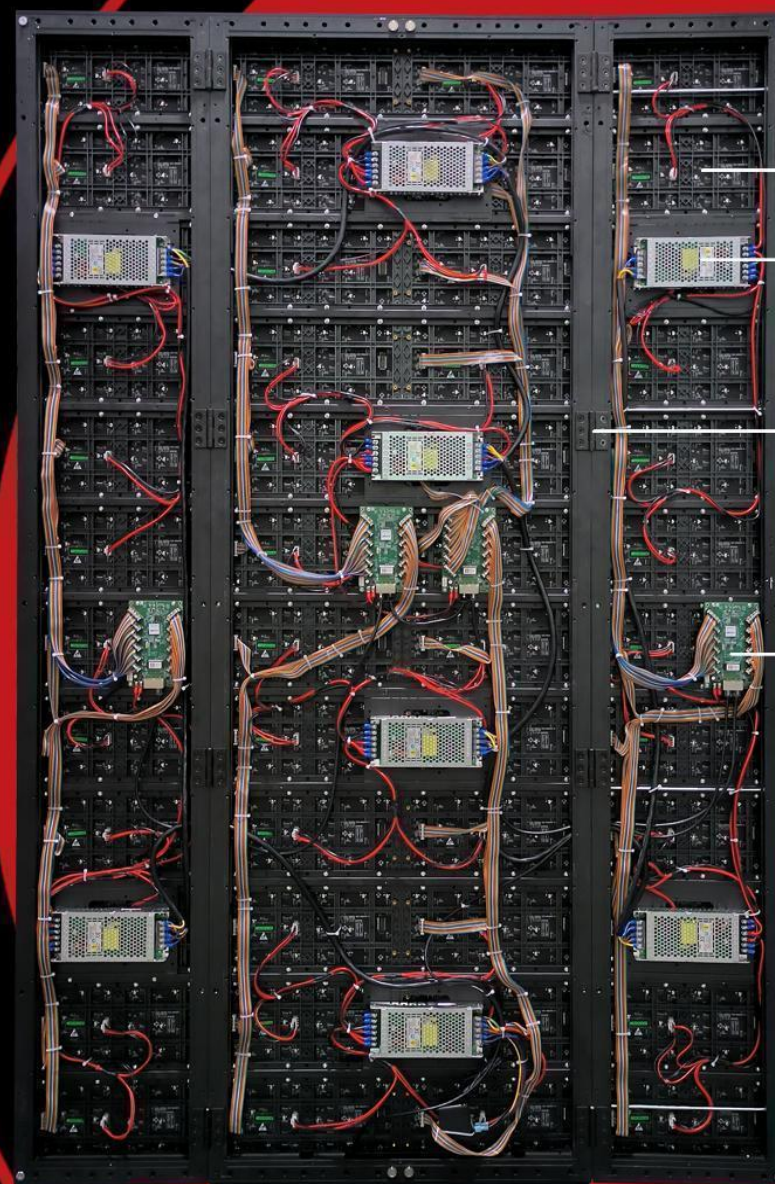
Remote control: LED advertising machines support remote control and real-time updates



Wide Viewing Angle

LED display have a wide viewing angle, high brightness and stability.the screen have very good erformance when take a video by camera

Cabinet detail



Magnet

Module

Power supply

Cabinet connection piece

Receiving card

Power aviation plug

Control box

Signal aviation plug



Folding

Quickly install the lock

Wanxiang Wheel

Folding LED advertising machine

Flexible folding design converts into two 640*1920mm double-sided screens, allowing viewing from both front and back. The foldable LED display features compact size for easy storage and transportation. When fully expanded, it seamlessly combines into a 1280*1920mm large screen for superior viewing experience.



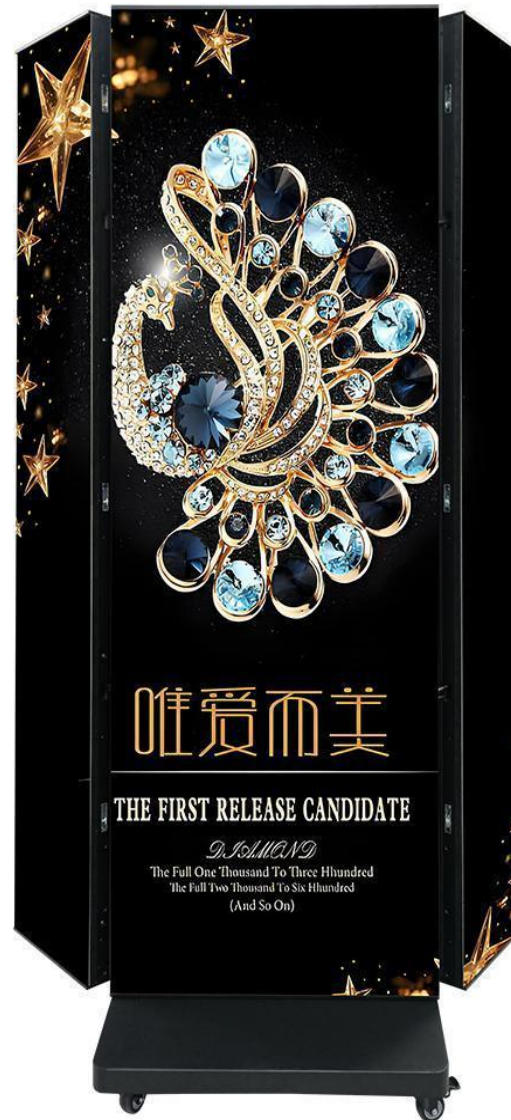
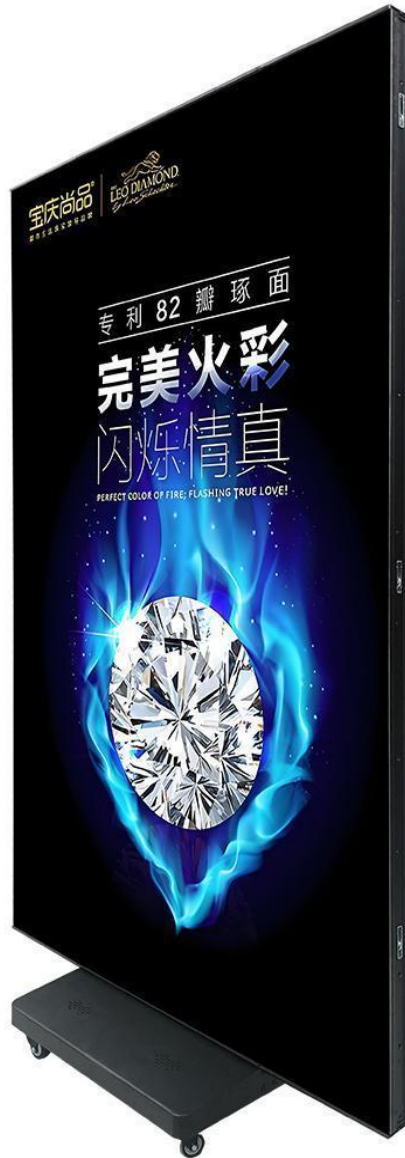
One click release of mobile app

Support one click upload of content on mobile phones, a foolproof software that even beginners can easily operate



Synchronous Control vs Asynchronous Control

The control box supports synchronous or asynchronous offline loop playback, capable of displaying either identical content across all screens or split-screen content.



Multiple Transmission Methods

The control box comes standard with USB drive support, WiFi, and Ethernet port, while offering optional HDMI and 4G wireless connectivity. Its multiple interfaces cater to diverse user transmission needs.



Real color, more realistic picture

The picture is vivid and delicate, the brightness is stable and even, not dazzling or grainy. Red, green and blue three-in-one LED lamp beads, with good consistency



Refreshing Ratio

3840Hz-7680Hz

Color Porcesso

16bit



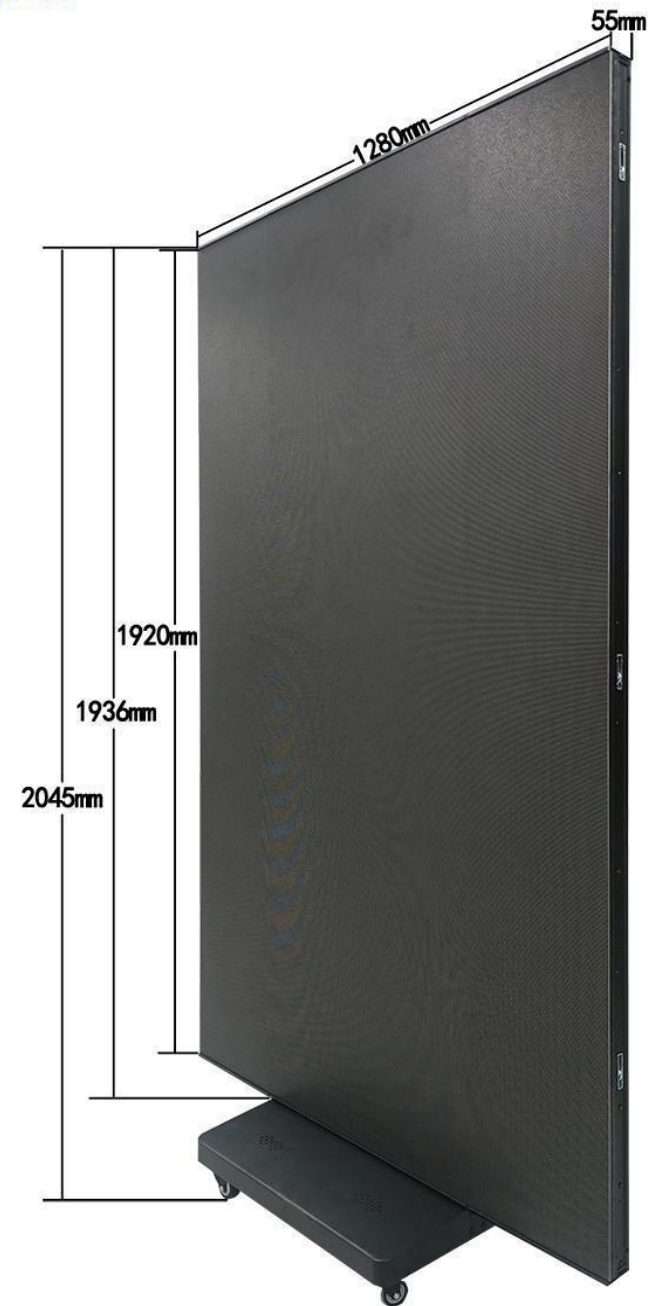
Product size



Folded thickness



Unfolded thickness



Model Number	P1.538	P1.86	P2	P2.5	P3.076
Physical Pitch	1.538mm	1.86mm	2mm	2.5mm	3.076mm
Package Mode	SMD1212	SMD1515	SMD1515	SMD1515/2020	SMD2020
Physical Density	1038336dots	710016dots	614400dots	393216 dots	259584 dots
Module Size	320*160mm				
Pixel Resolution	208*104=21632 dots	172*86=14792 dots	160*80 =12800dots	128*64=8192 dots	104*52=5408 dots
Module Thickness	15mm				
Weight	0.5kg				
Max Power	25W				
Scan Mode	1/52S	1/43S	1/40S	1/32S	1/26S
Match Cabinet	1280*1920*55mm				
Cabinet Weight	83kg±1kg				
Pixel Per Cabinet	832*1248=1038336dots	688*1032=710016dots	640*960=614400ots	512*768=393216dots	416*624=259584dots
Number Of Cabinet Modules	48pcs				
Recommended Viewing	1.5-50m	2-50m	2-50m	2-50m	3-50m
Change Frame Frequency	60Hz				
Rate Refresh	3840Hz-7680Hz				
Pixel Configuration	1R1G1B				
Brightness Of White Balance	≥700cd/m²	≥700cd/m²	≥700cd/m²	≥800cd/m²	≥820cd/m²
Number Of Power Supplies In The Cabinet	8pcs				
Power Supply	5V/40A*8 PCS				
Average Power Consumption	530W/PCS				

Max. Power Consumption	1600W/PCS				
Protection level	IP43				
Protective Measures	Three Proofing Paint				
Module Working Voltage	DC 5V				
Operating	-20 ~ +50℃				
Life Time	>1000000h				
The Rate	<0.0001				
MBTF	>5000h				
Maintenance Connection Mode	Front Maintenance				
Best Viewing Angle	H:160°, V:160°	H:160°, V:160°	H:140°, V:140°	H:140°, V:140°	H:140°, V:140°
Cabinet Matching Module Model	P1.538/P1.86/P2/P2.5/P3.076				
Input Voltage	220V; AC±10%				
Evenness	≤ 0.5mm				
Working Voltage	220V; AC±10%				
CPU	Pentium4 Or Abov				
Operation System	WIN98/2000/NT/XP/WIN7/WIN8/WIN10/WIN11				
Synchronous/Asynchronous	Support				
Communication method	APP/USB /Ethernet port/4G remote				
Interface	RJ45、WIFI、 USB、 HDMI				
Audio	3.5 Audio Interface/Supports External Amplifier				
luminance uniformity	≥95%				
Driving IC	PWM				
Gray scale	14-16bit Adjustable Grayscale				