

P2. 976/P3. 91/P4. 81

P6. 25/P7. 8/P10



500×500mm / 500×750mm / 500×1000mm Aluminum Profile Cabinet  
with Aluminum Base Series





# High-Performance Aluminum-Based Outdoor LED Display







Front/Rear Maintenance



Ultra slim



Aluminum Base/Chassis



Quick installation

500×500mm /500\*750mm/ 500×1000mm Front/Rear Maintenance  
Aluminum Base LED Display

**Quick Installation & Removal:** The aluminum-based outdoor LED display features built-in rapid-lock mechanisms, enabling simple and efficient assembly/disassembly. A single cabinet can typically be installed within 8-10 seconds, significantly reducing time and labor costs.



High gray scale



High Fire Resistance Rating







**Wide Viewing Angle**

LED display have a wide viewing angle, high brightness and stability.the screen have very good erformance when take a video by carmera

## Ultra Power Efficient

Common cathode energy-saving circuit design, independent private model, power consumption saving more than 50% compared to traditional outdoor screens, good heat dissipation

## Ultra-stable

Common shade energy-saving design, low heat; All aluminum bottom shell product, good heat dissipation, wireless connection

## Ultra Bright

Outdoor surface sticker high brightness product, light error  $\leq 5\%$ , still as good as new after 5 years

## Hardwired

Adopting a hard connection design, there is no need for wiring, the wiring method is more aesthetically pleasing, the installation is convenient and fast, and more stable

## Ultra lightweight

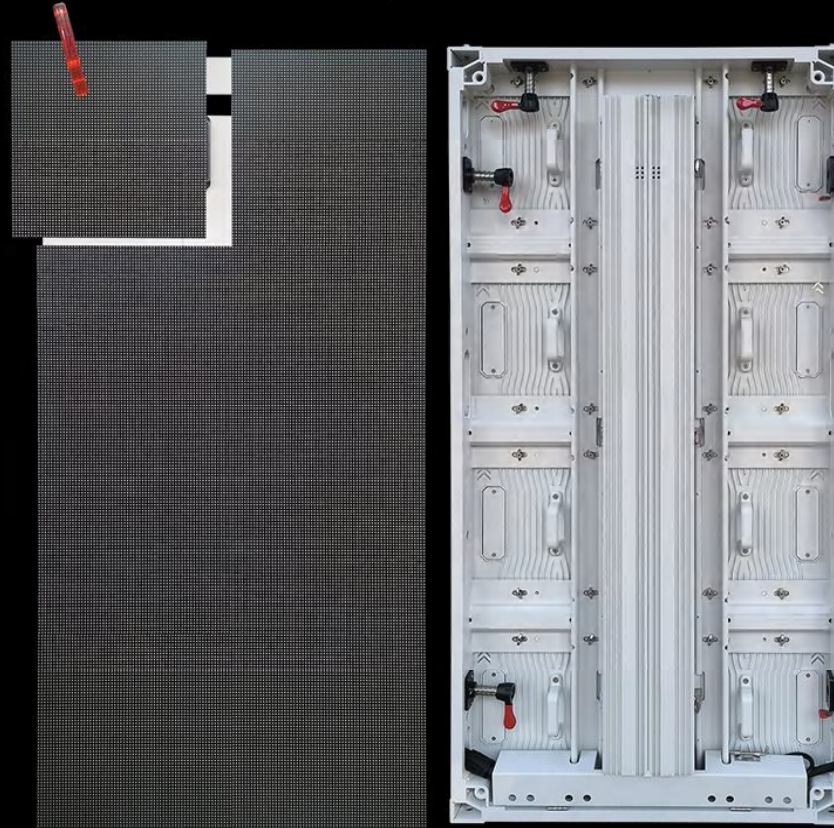
Lightweight and lightweight, the aluminum cabinet weighs  $17.7\text{kg/m}^2$  and has a thickness of only 70mm. It supports full front or rear maintenance, saving installation space

## Wireless Design

There is a hidden wire cabinet at the bottom of the cabinet, and there is no wire connection when viewed from the back of the cabinet, which is beautiful and elegant

## Saving

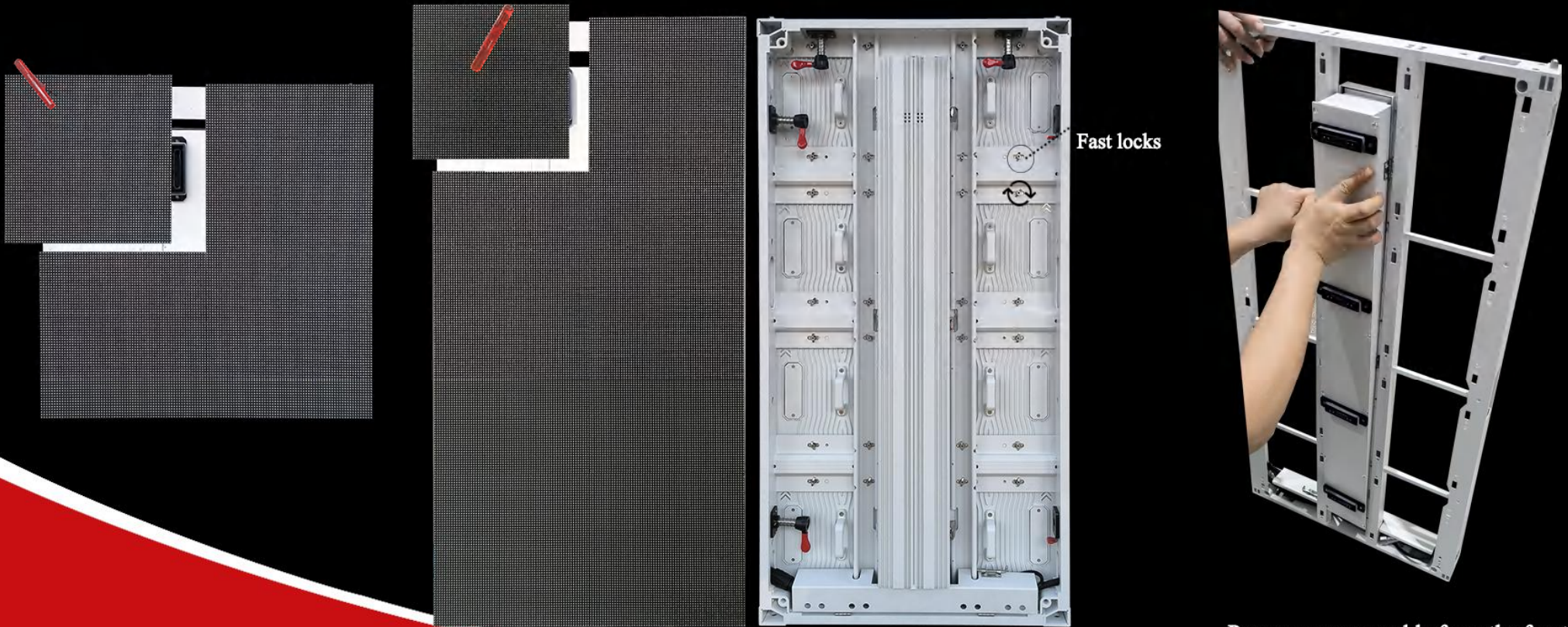
The edge of the screen can be chosen without wrapping, saving costs, with strong thermal conductivity, no need to install air conditioning, and an average power consumption of  $200\text{W/m}^2$





## Front/Rear maintenance

The module can be quickly assembled, disassembled, and maintained from the front using a hex key. The rear cover can be directly removed from the front, featuring a quick-lock design for convenient front/rear maintenance. The four-in-one locking mechanism enables installation in just 8 seconds, saving both time and labor costs. Integrated HUB and aviation connectors streamline repair and installation expenses, while the modular design further enhances maintenance cost-efficiency.

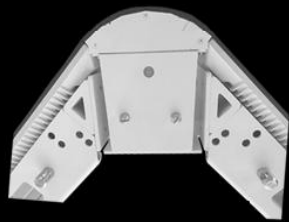
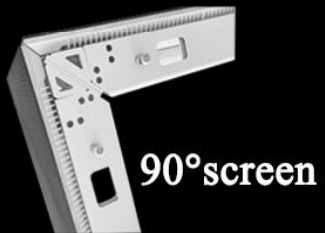


Rear cover removable from the front

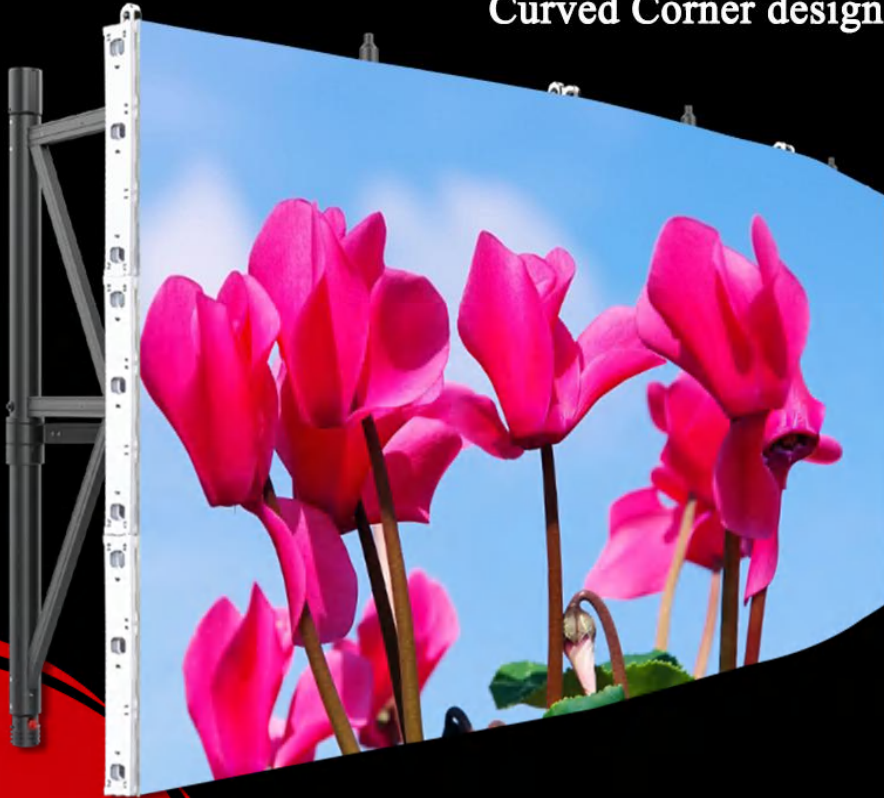


## Arc splicing

Standard, beveled, and curved cabinets can be interlocked for simultaneous use on the same screen. With quick-lock mechanisms enabling seamless splicing into any curved configuration within 8-10 seconds, they are suitable for various temporary events, performance scenarios, or fixed installations, capable of creating unique visual effects tailored to display content.

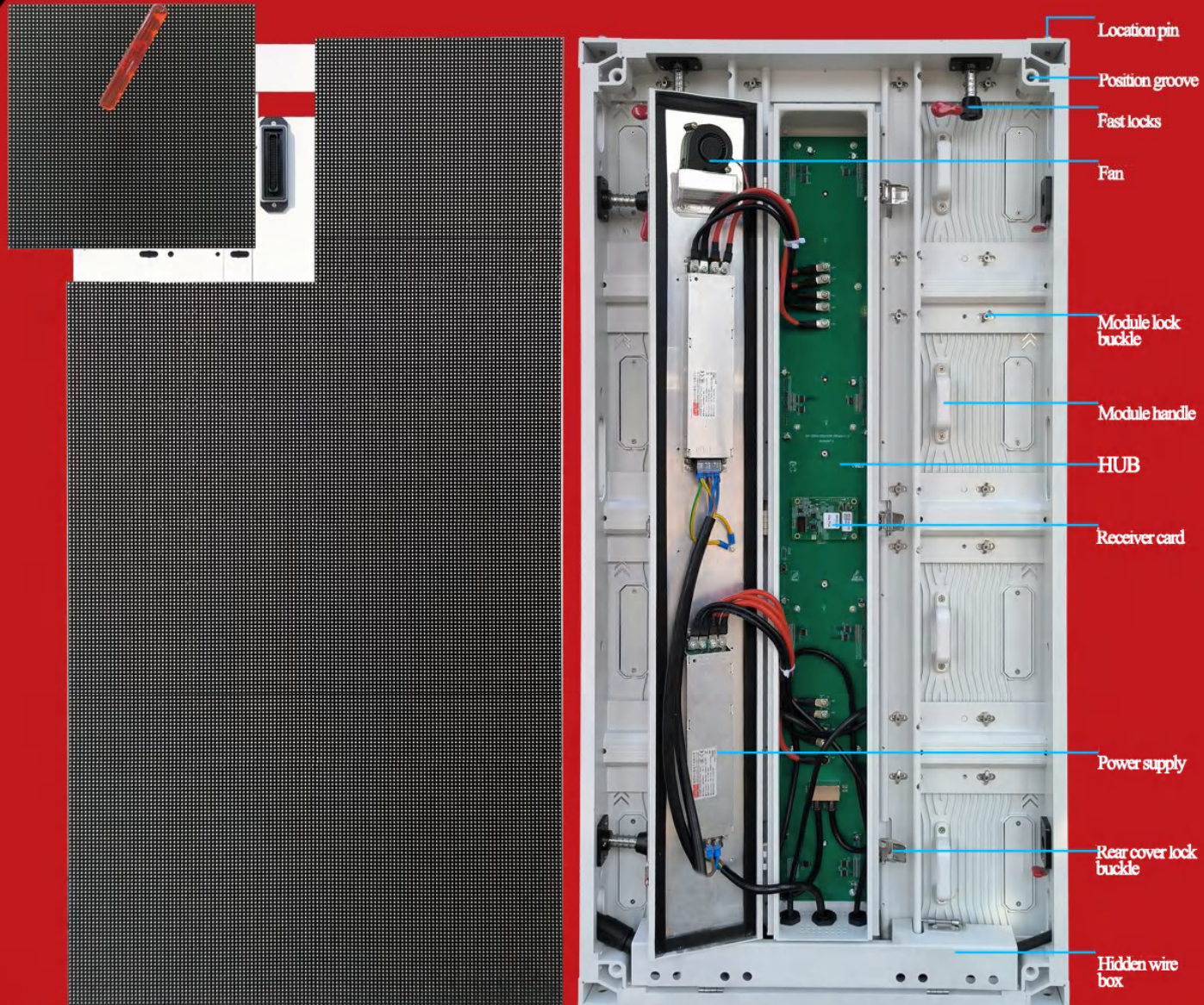


Curved Corner design





## Cabinet detail





## High Fire Resistance Rating

The module adopts an aluminum base shell design with a fire resistance rating of 5VB. The cabinet is constructed with white aluminum profiles, featuring high-temperature resistance, excellent heat dissipation, and superior safety performance. Even under prolonged use, the base shell remains crack-resistant, ensuring long-lasting durability.





## Waterproof and Dustproof, Safe and Reliable

With an IP65 or higher protection rating, it is waterproof, dustproof, and UV-resistant, ensuring uninterrupted use in any harsh outdoor environment





Real color, more realistic picture

The picture is vivid and delicate, the brightness is stable and even, not dazzling or grainy. Red, green and blue three-in-one LED lamp beads, with good consistency





## High grayscale

The grayscale level is up to 16 bits, and dark colors can be displayed clearly. The color gradient transition of the picture is smooth, and the overall color display effect is clearer and more vivid





## Installation mode



Hanging



Mosaic



Wall mounting



Suspension type



SPAR



Floor type



Model Number	P2.976	P3.91	P4.81	P6.25	P7.8	P10.4
Physical Pitch	2.976mm	3.91mm	4.81mm	6.25mm	7.8mm	10.4mm
Package Mode	SMD1415/1516	SMD1921	SMD1921	SMD2727/3535	SMD2727/3535	SMD2727/3535
Physical Density	112896dots/m²	65536 dots/m²	43264dots/m²	25600 dots/m²	16384dots/m²	9216 dots/m²
Module Size	250*250mm					
Pixel Resolution	84*84=7056dots	64*64=4096dots	52*52=2704dots	40*40=1600dots	32*32=1024dots	24*24=576dots
Module Thickness	17mm					
Weight	1.005kg					
Max Power	40W	40W	40W	40W	40W	40W
Scan Mode	21S	8S	13S	5S	4S	2S
Match Cabinet	500*500*70mm/500*750*70mm/500*1000*70mm					
Cabinet Weight	9kg/12.5kg/17.7kg					
Pixel Per Cabinet	168*168=28224dots	128*128=16384dots	104*104=10816dots	80*80=6400dots	64*64=4096dots	48*48=2304dots
Number Of CabinetModules	4pcs /6pcs /8pcs					
Recommended Viewing	3-100m	4-100m	5-100m	6-100m	8-100m	10-100m
Module Base Shell Material	Aluminum Base Shell					
Rate Refresh	≥3840Hz					
Pixel Configuration	1R1G1B					
Brightness Of WhiteBalance	≥4500cd/m²	≥5000cd/m²	≥4500cd/m²	≥5000cd/m²	≥6000cd/m²	≥6000cd/m²
Grayscale Level	16bit	16bit	14bit	14bit	14bit	14bit
Change frame frequency	60Hz					
Number Of Power	1pcs /1pcs /2pcs					



Supplies In The Cabinet						
Power Supply	5V 40A*1 PCS, 5V 60A*1 PCS, 5V 40A*2 PCS or 5V80A*1PCS					
Average Power Consumption	265W/m²					
Max. Power Consumption	800W/m²					
Protection Level	IP65					
Fire resistance rating	5VB					
Module Working Voltage	DC 5V					
Operating	-20 ~ +50°C					
Life Time	>1000000h					
The Rate	<0.0001					
MBTF	>5000h					
Maintenance Mode	Full Front/Rear Maintenance					
Best Viewing Angle	H:160° ; V:160°	H:160° ; V:160°	H:140° ; V:140°	H:140° ; V:140°	H:120° ; V:120°	H:120° ; V:120°
Cabinet MatchingModule Model	P2.976/P3.91/P4.81/P6.25/P7.8/P10.4					
Input Voltage	220V; AC±10%					
Evenness	≤ 0.5mm					
Working Voltage	220V; AC±10%					
CPU	I5 or above I5					
Operation System	WIN98/2000/NT/XP/WIN7/WIN8/WIN9/WIN10/WIN11					
Control Method	Synchronization					
Driving IC	PWM					