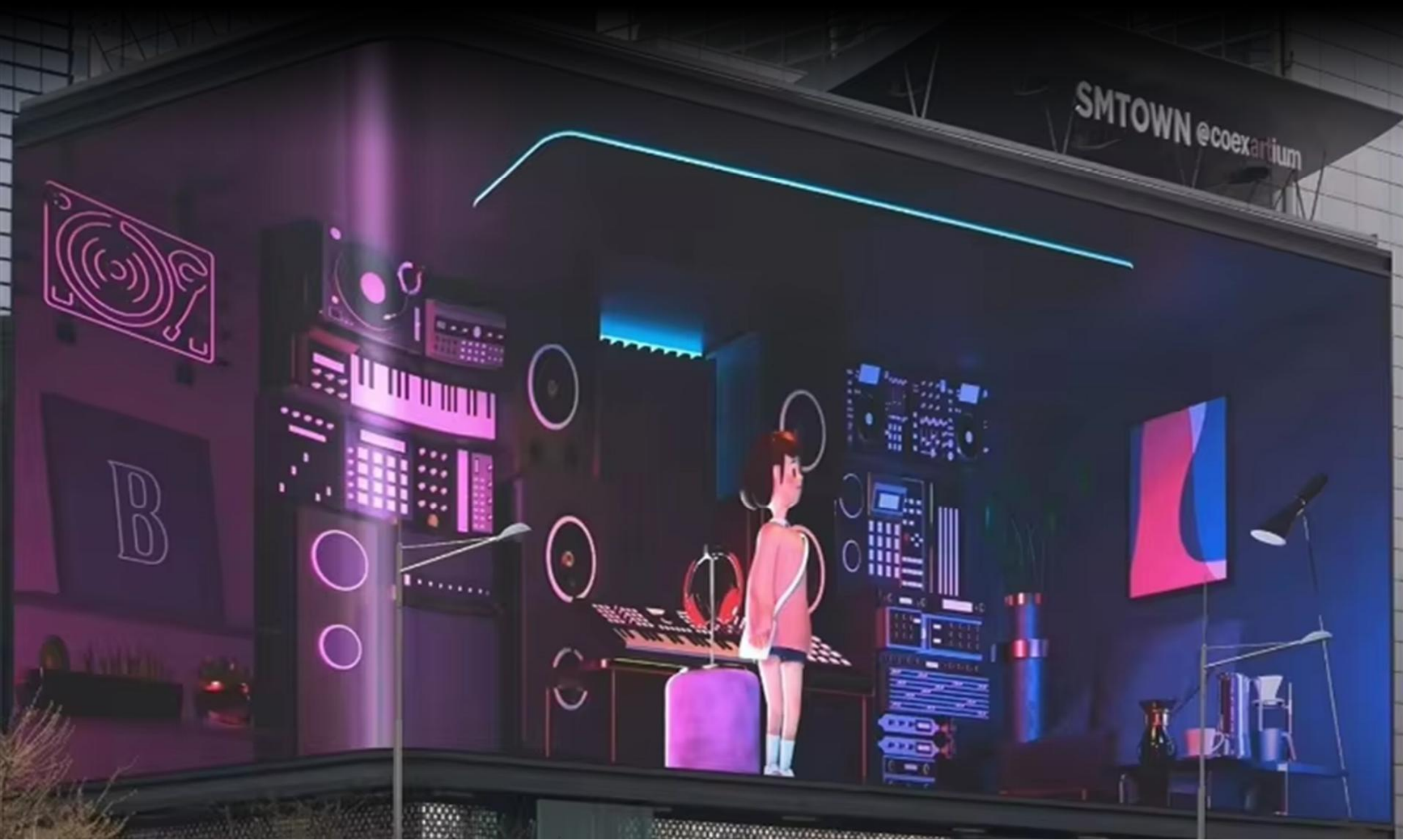


P4. 44、P5. 71、P6. 67、P8、P10

640×960mm Aluminum Profile Cabinet with Aluminum Base
Module Series



High-Performance Outdoor Front/Rear Maintenance LED Display with Aluminum Base





Front/Rear Maintenance



Ultra slim



Aluminum Base/Chassis



Quick installation

640×960mm Front/Rear Maintenance Aluminum Base
LED Display Series

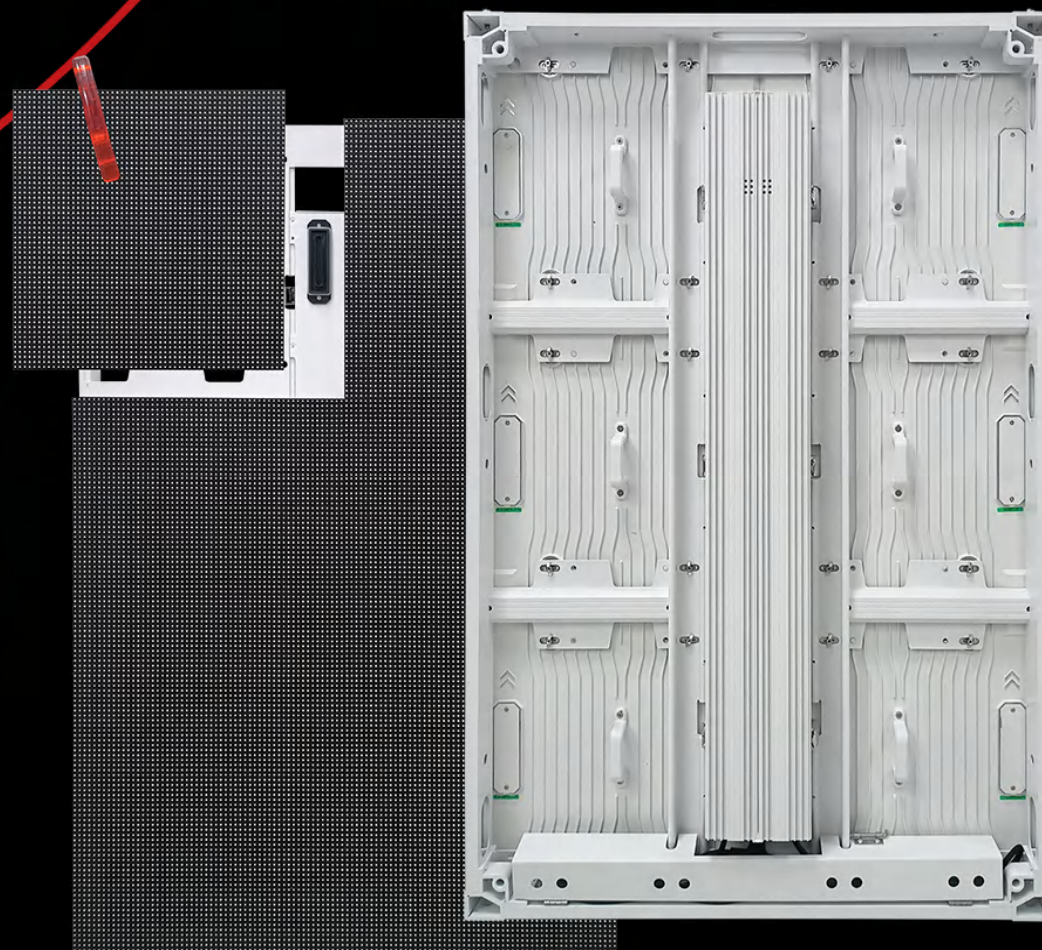
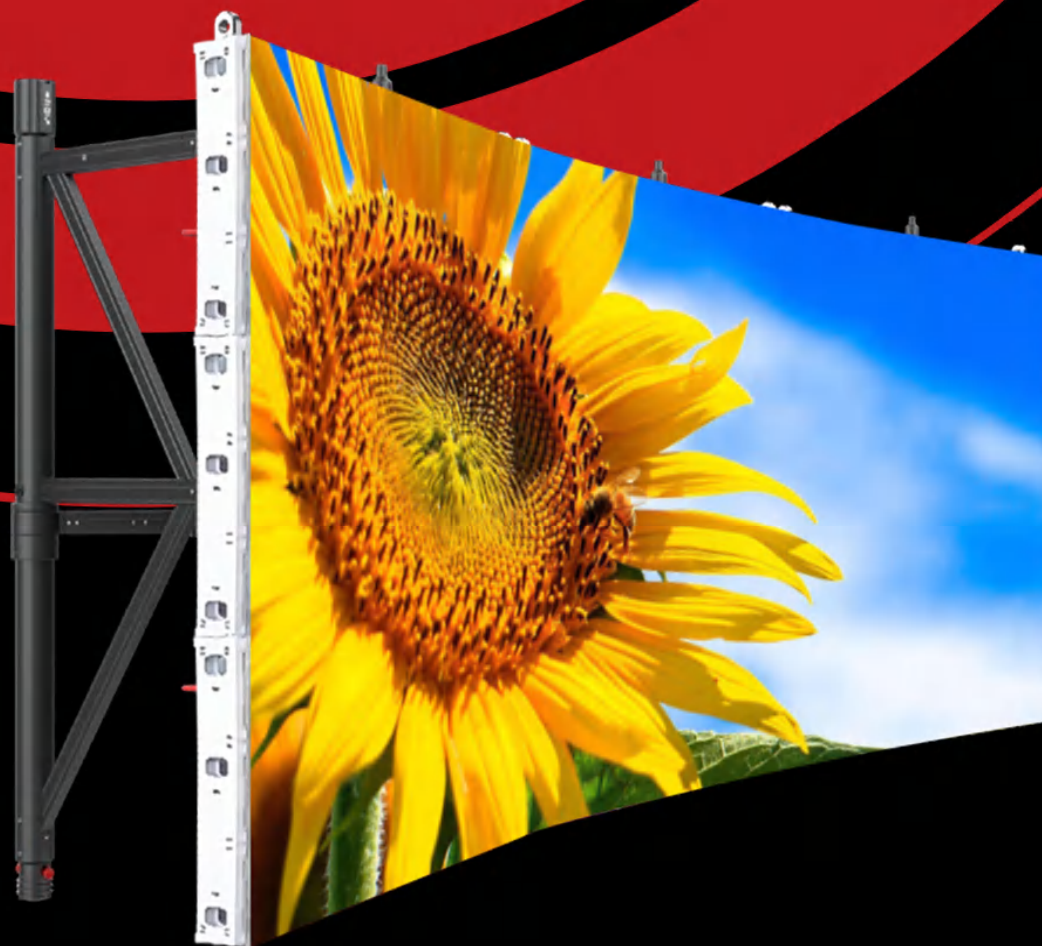
Quick Installation & Removal: The modules can be rapidly assembled and disassembled using a hex key, ensuring efficient operation. Featuring an aluminum base shell, they deliver superior heat dissipation and waterproof performance.



High gray scale



High Fire Resistance Rating





Wide Viewing Angle

LED display have a wide viewing angle, high brightness and stability.
the screen have very good performace when take a
video by camera

Ultra Power Efficient

Common cathode energy-saving circuit design, independent private model, power consumption saving more than 50% compared to traditional outdoor screens, good heat dissipation

Ultra-stable

Common shade energy-saving design, low heat; All aluminum bottom shell product, good heat dissipation, wireless connection

Ultra Bright

Outdoor surface sticker high brightness product, light error $\leq 5\%$, still as good as new after 5 years

Hardwired

Adopting a hard connection design, there is no need for wiring, the wiring method is more aesthetically pleasing, the installation is convenient and fast, and more stable

Ultra lightweight

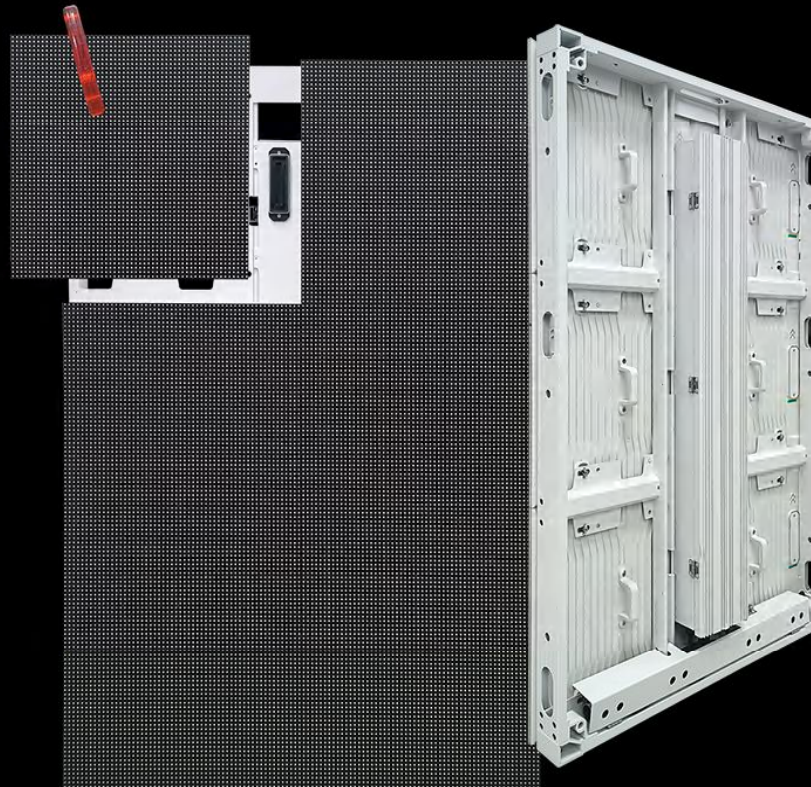
Lightweight and lightweight, the aluminum cabinet weighs 18.5kg/m² and has a thickness of only 74mm. It supports full front or rear maintenance, saving installation space

Wireless Design

There is a hidden wire cabinet at the bottom of the cabinet, and there is no wire connection when viewed from the back of the cabinet, which is beautiful and elegant

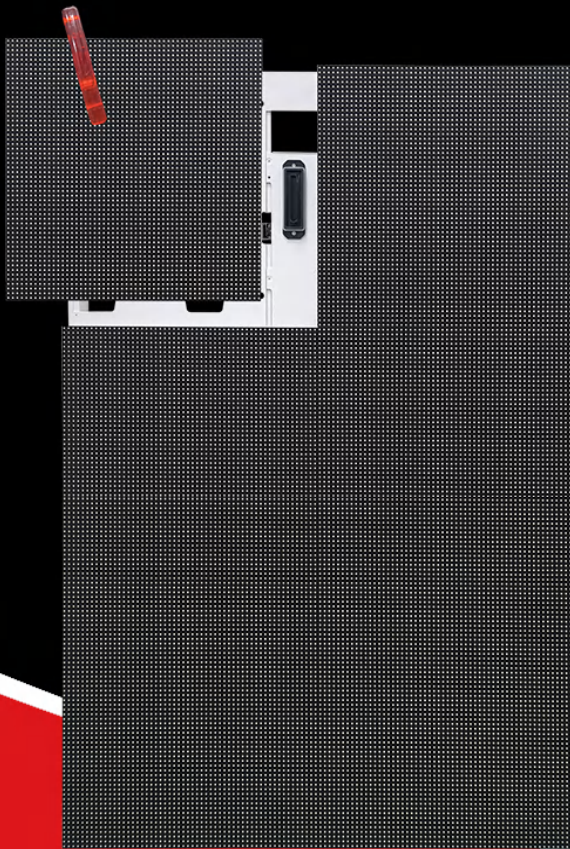
Saving

The edge of the screen can be chosen without wrapping, saving costs, with strong thermal conductivity, no need to install air conditioning



Front/Rear maintenance

The module can be quickly assembled, disassembled, and maintained from the front using a hex key. The rear cover can be directly removed from the front, featuring a quick-lock design for convenient front/rear maintenance. The four-in-one locking mechanism enables installation in just 8 seconds, saving both time and labor costs. Integrated HUB and aviation connectors streamline repair and installation expenses, while the modular design further enhances maintenance cost-efficiency.

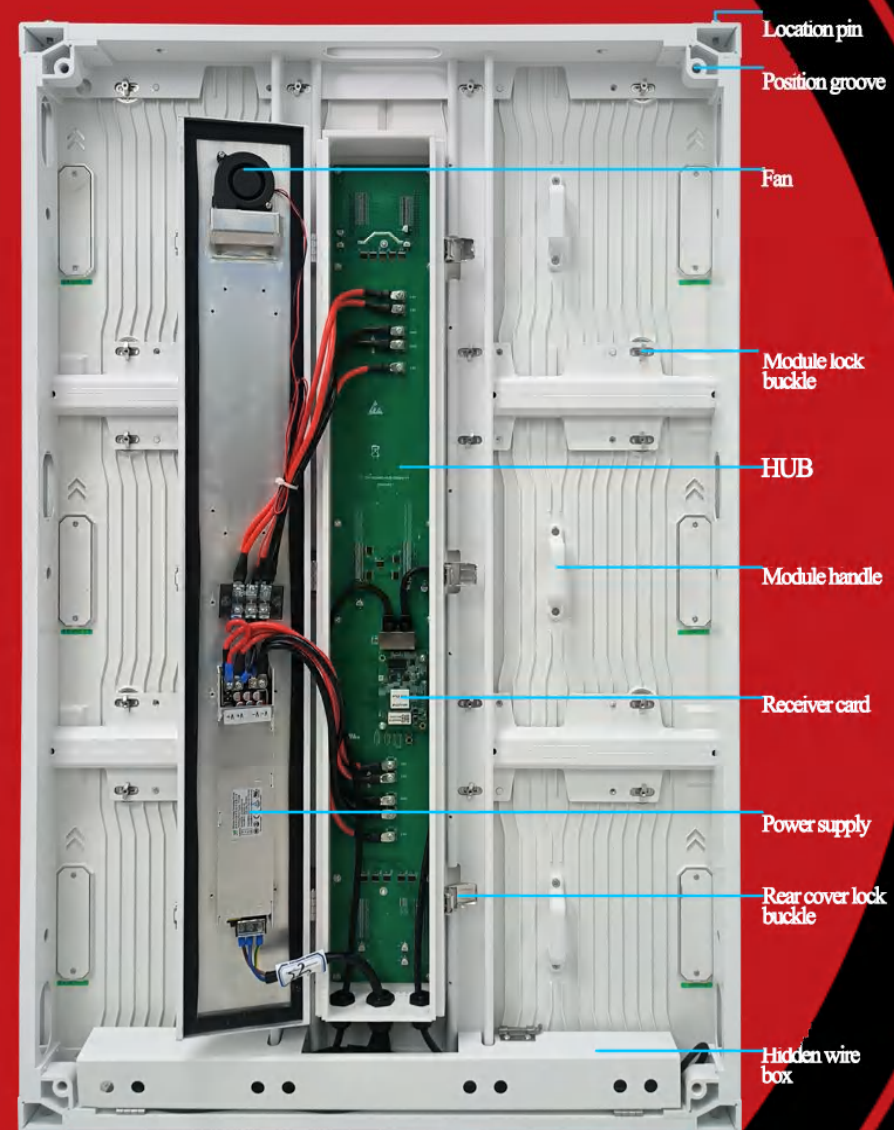
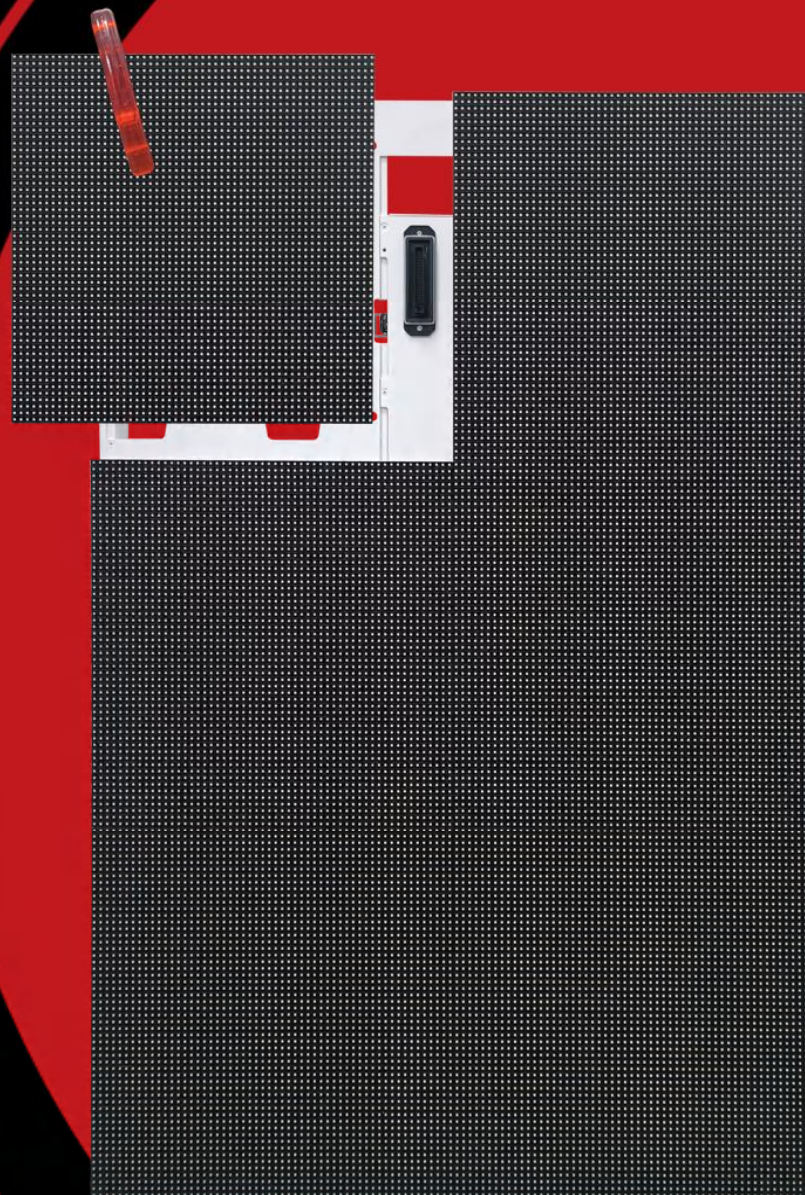


Fast locks



Rear cover removable from the front

Cabinet detail



High Fire Resistance Rating

The module adopts an aluminum base shell design with a fire resistance rating of 5VB. The cabinet is constructed with white aluminum profiles, featuring high-temperature resistance, excellent heat dissipation, and superior safety performance. Even under prolonged use, the base shell remains crack-resistant, ensuring long-lasting durability.



Waterproof and Dustproof, Safe and Reliable

With an IP65 or higher protection rating, it is waterproof, dustproof, and UV-resistant, ensuring uninterrupted use in any harsh outdoor environment



Real color, more realistic picture

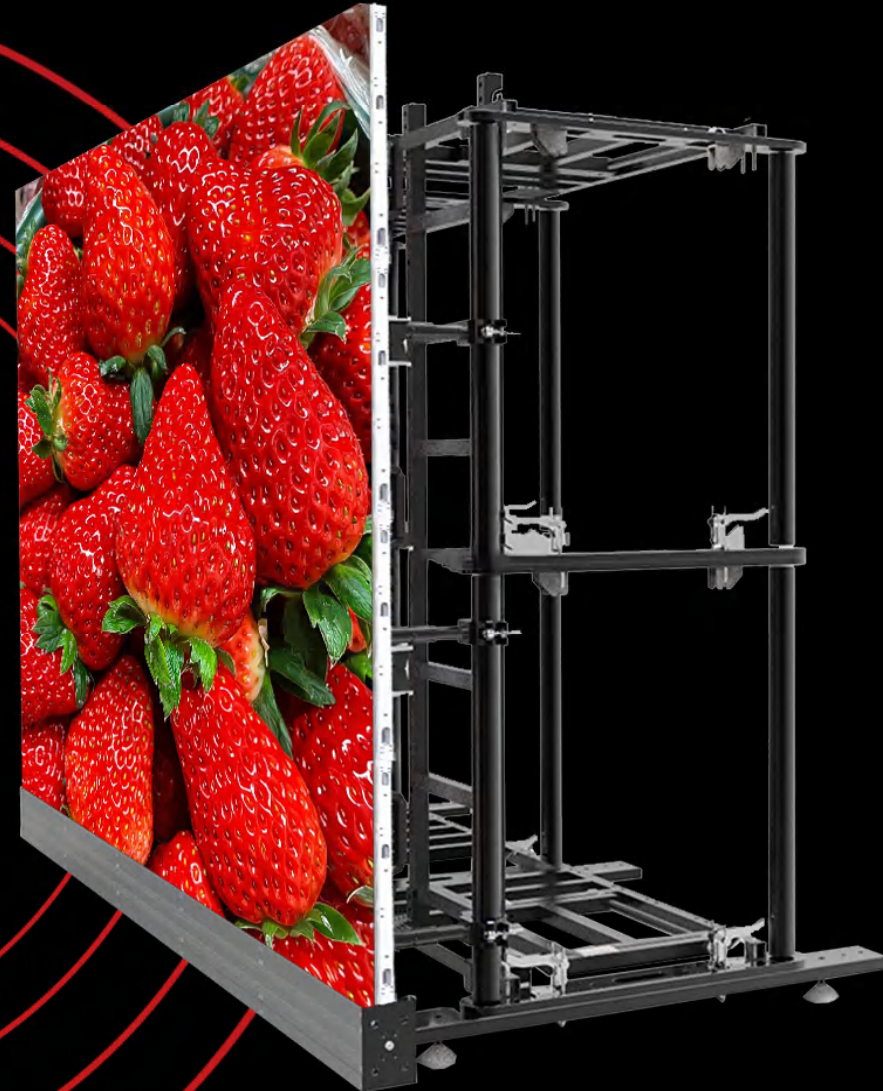
The picture is vivid and delicate, the brightness is stable and even, not dazzling or grainy. Red, green and blue three-in-one LED lamp beads, with good consistency

Refreshing Ratio
3840HZ-7680HZ
Color Porcesso
16bit



High grayscale

The grayscale level is up to 16 bits, and dark colors can be displayed clearly. The color gradient transition of the picture is smooth, and the overall color display effect is clearer and more vivid



Module & Cabinet



Installation mode



Hanging



Mosaic



Wall mounting



Suspension type



SPAR



Floor type

Model Number	P4.44	P5.71	P6.67	P8	P10
Physical Pitch	4.44mm	5.71mm	6.67mm	8mm	10mm
Package Mode	SMD2727	SMD2727	SMD2727	SMD2727	SMD2727
Physical Density	50625dots/m²	30625 dots/m²	22500dots/m²	15625dots/m²	10000dots/m²
Module Size	320*320mm				
Pixel Resolution	72*72=5184dots	56*56=3136dots	48*48=2304dots	40*40=1600dots	32*32=1024dots
Module Thickness	23mm				
Weight	1.73kg				
Max Power	80W				
Scan Mode	9S	7S	6S	5S	2S
Match Cabinet	640*960*74mm				
Cabinet Weight	18.5kg				
Pixel Per Cabinet	144*216=31104dots	112*168=18816dots	96*144=13824dots	80*120=9600dots	64*96=6144dots
Number Of CabinetModules	6pcs				
Recommended Viewing	4-100m	6-100m	7-100m	8-100m	10-100m
Module Base Shell Material	Aluminum Base Shell				
Rate Refresh	3840Hz-7680Hz				
Pixel Configuration	1R1G1B				
Brightness Of WhiteBalance	≥5000cd/m²	≥6500cd/m²	≥6000cd/m²	≥6000cd/m²	≥6000cd/m²
Grayscale Level	12bit-16bit				
Change frame frequency	60Hz				
Number Of Power	1pcs				

Supplies In The Cabinet					
Power Supply	5V100A*1PCS				
Average Power Consumption	265W/m²				
Max. Power Consumption	800W/m²				
Protection Level	IP65				
Fire resistance rating	5VB				
Module Working Voltage	DC 5V				
Operating	-20 ~ +50°C				
Life Time	>1000000h				
The Rate	<0.0001				
MBTF	>5000h				
Maintenance Mode	Full Front/Rear Maintenance				
Best Viewing Angle	H:140° ; V:140°	H:140° ; V:140°	H:140° ; V:140°	H:120° ; V:120°	H:120° ; V:120°
Cabinet MatchingModule Model	P4.44/P5.71/P6.67/P8/P10				
Input Voltage	220V; AC±10%				
Evenness	≤ 0.5mm				
Working Voltage	220V; AC±10%				
CPU	I5 or above I5				
Operation System	WIN98/2000/NT/XP/WIN7/WIN8/WIN9/WIN10/WIN11				
Control Method	Synchronization				
Driving IC	PWM				