



# ***960mm Series brochures***

ES2 Seires

P4.44 /P5.7 /P6.66 /P8 /P10  
(960mmX960mm)



An aerial photograph of a city skyline, featuring a large, modern residential complex with multiple high-rise buildings. The complex is highlighted with a blue semi-transparent overlay. The image is framed by a yellow diagonal band on the left and bottom edges.

# PRODUCTS INTRODUCTION

- ◆ ***Product Overview***
- ◆ ***Features***
- ◆ ***Project Cases***
- ◆ ***Parameters***



# ***PART 1***

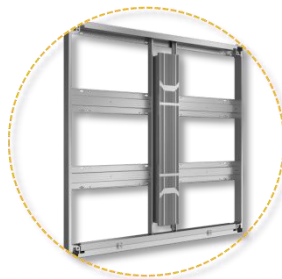
## ***Product overview***



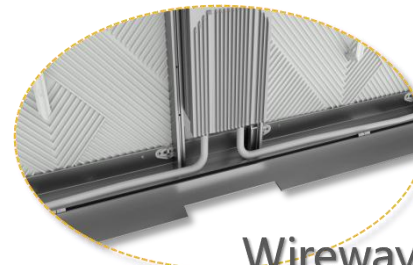
# Appearance



Aluminum Die-casting module cover



Aluminum frame



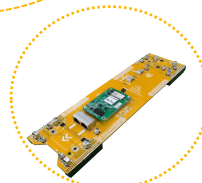
Wireway

 ***Linear design, Concise style***

 ***Grain design, perfect hierarchy***



Power supply



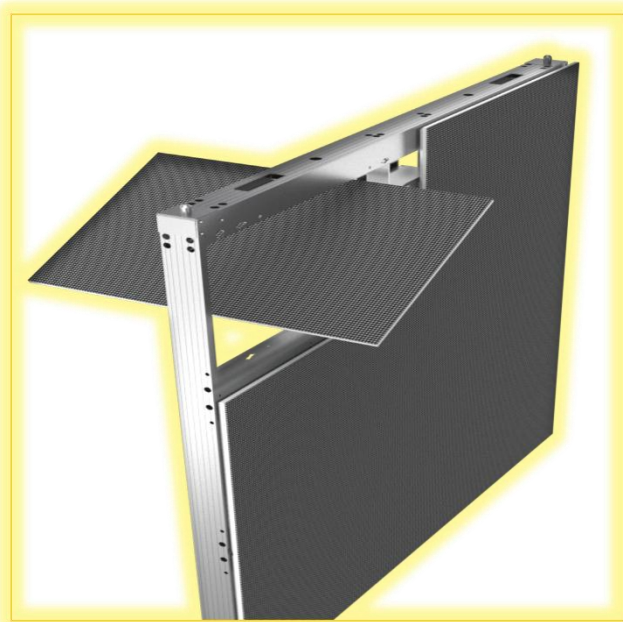
HUB+ Receiver







# Pixel Pitch and Cabinet size



## Pixel Pitch

→	P4.44	1/9 scannings
→	P5.7	1/7 scannings
→	P6.67	1/6 scannings
→	P8	1/4 scannings
→	P10	1/2 scannings

## Flexible cabinet size (mm)

960×640; 1440×640

960×960; 1440×960

Can meet the requirements of different field size





## ***PART 2***

# ***Features***



Safty

Stable

High  
Performance

Convenience

High contrast rate

- Die-Casting Aluminum design: High fire protection rate, Can get the TUV of 5VB fire protection certification,
- Special waterproof design, up to IP65
- Full-Aluminum design, with special grain design, good heat-dissipation;
- Partial voltage design, lower heat-emitting, longer lifetime
- With HUB between modules and receiving card, more stable
- Creating circuit design, high effective rate, Brightness can range from 6500nits to 10000nits
- Full front & rear maintenance design, easy install and save installation space
- Lightweight design, 30kg/m<sup>2</sup>, thickness is only 77mm;
- Modules can be switched between right and left side, lower-cost
- Creating mask design, can higher the contrast rate
- With high precision mask design, no block color difference





## *Heat-Emitting and low power consumption design*



**Partial voltage design:** lower  
Heat-emitting & power  
consumption

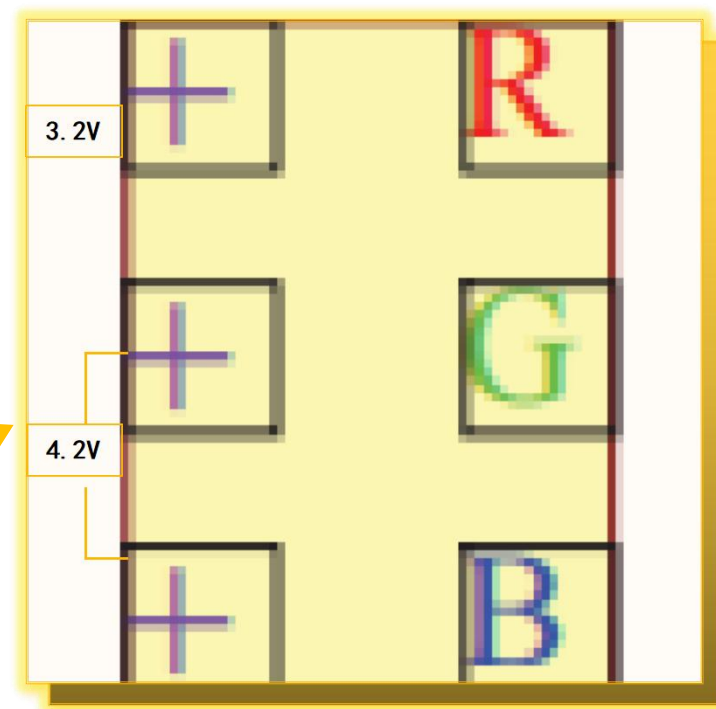
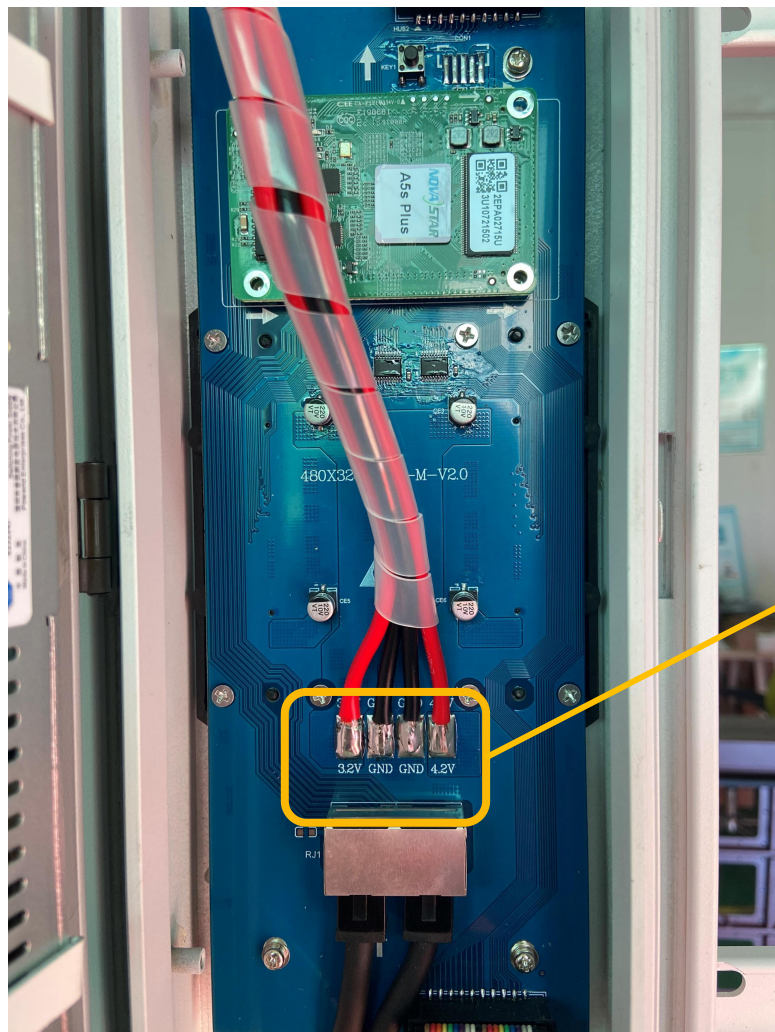
**Die-Casting Aluminum design:**  
Good Heat-emitting

**Grain Heat-emitting design:**  
bigger heat-emitting area, no  
need to add fans or air  
conditioner for the screen





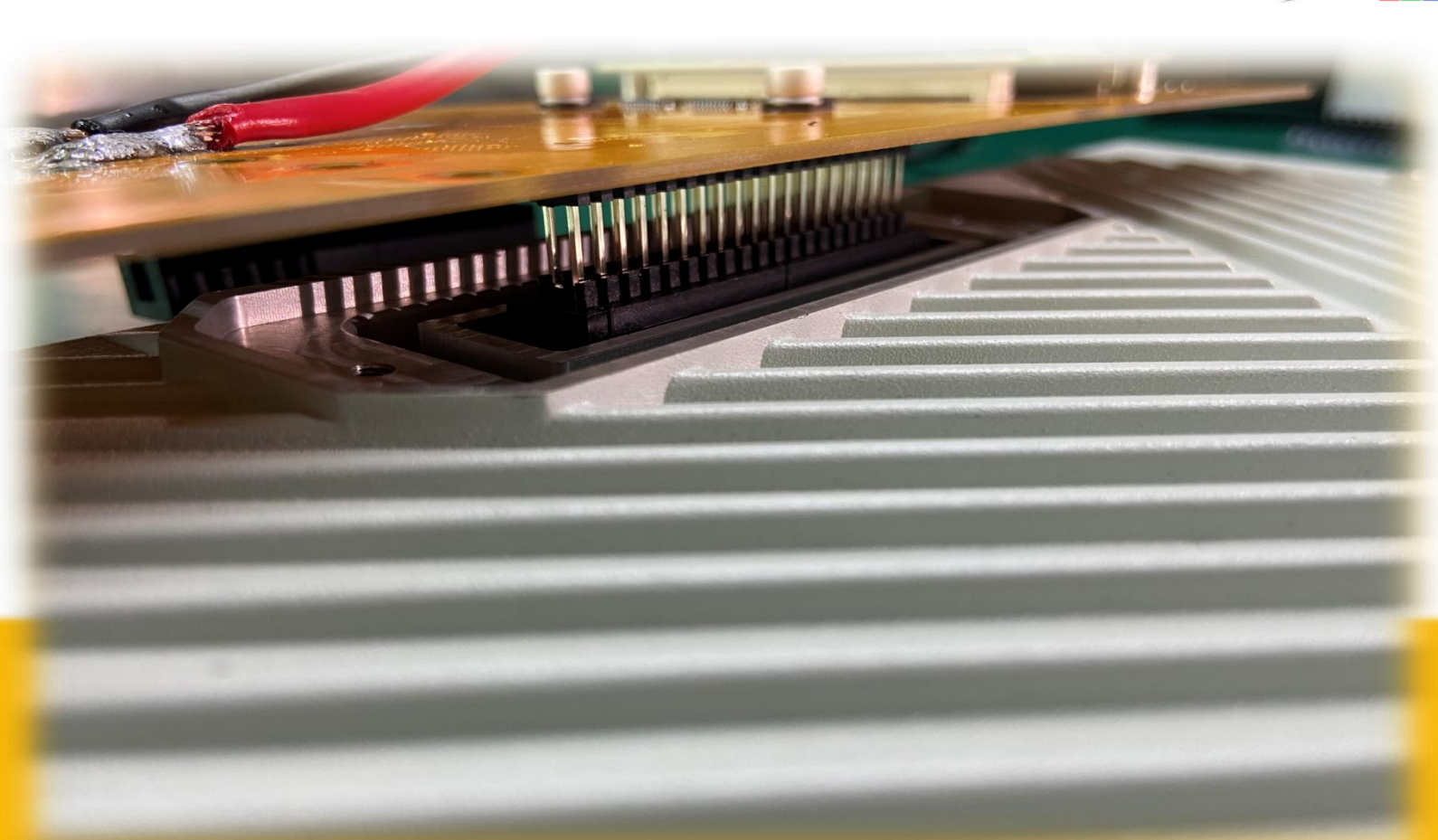
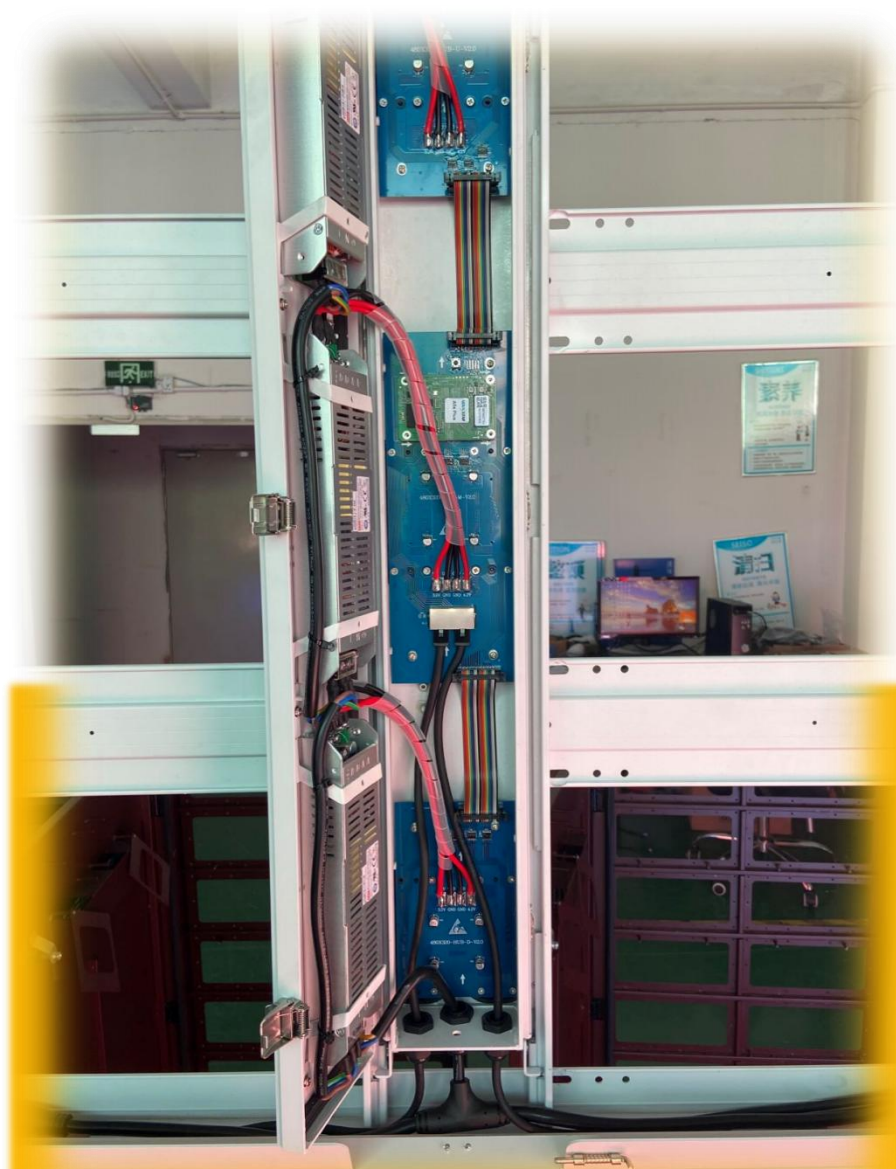
# *Partial power design*



*With partial power design ,lower-power consumption, Max. is 650W/m<sup>2</sup>*



*HUB design*



*HUB design, safe and stable*

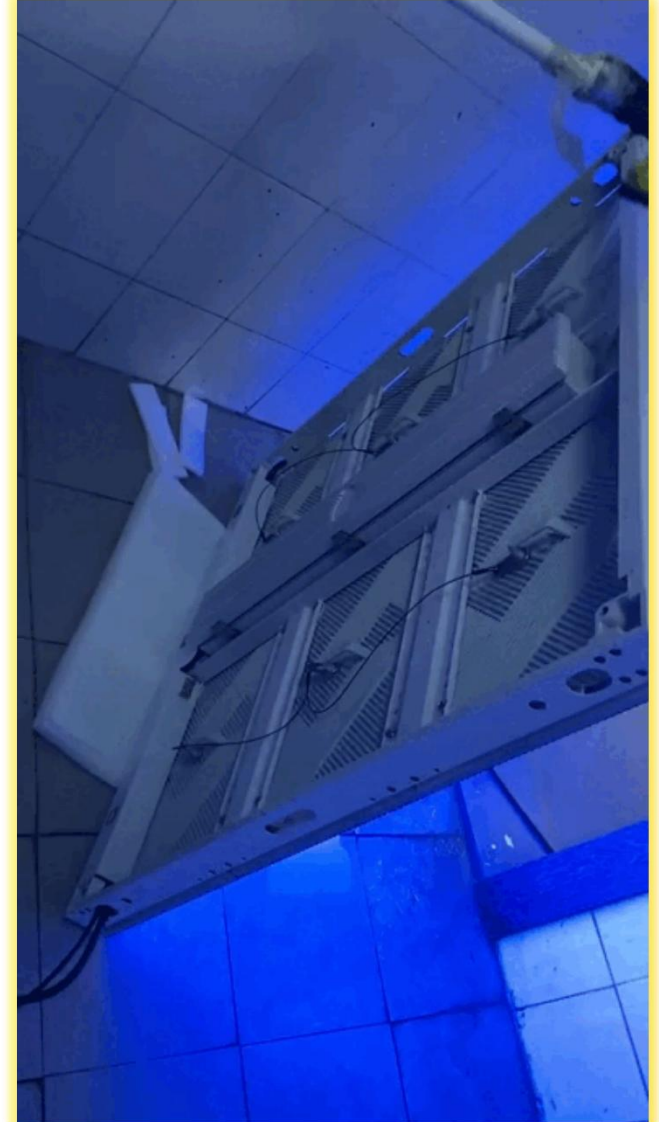




# Waterproof Testings



**IP65**  
*No need wrapping structure  
suround the screen, lower-cost*





# Water-proof Desgin



*PG water proof  
connectors,  
self-lock  
waterproof  
connectors*



*Original design  
multilayers  
waterproof  
rubber gasket  
between modules  
and power box.*

*Power box  
waterproof  
rubber  
gascket*







## Brightness Testings



*Standard Brightness  $\geq 6500\text{cd/m}^2$   
have more than 10000nits options too*



## *Full front & rear design*



*Power box  
front maintenance*

*Modules  
front maintenance*





*Moudles can switch between  
right and left side*







## *Thickness design*

*Thickness is only 77mm*

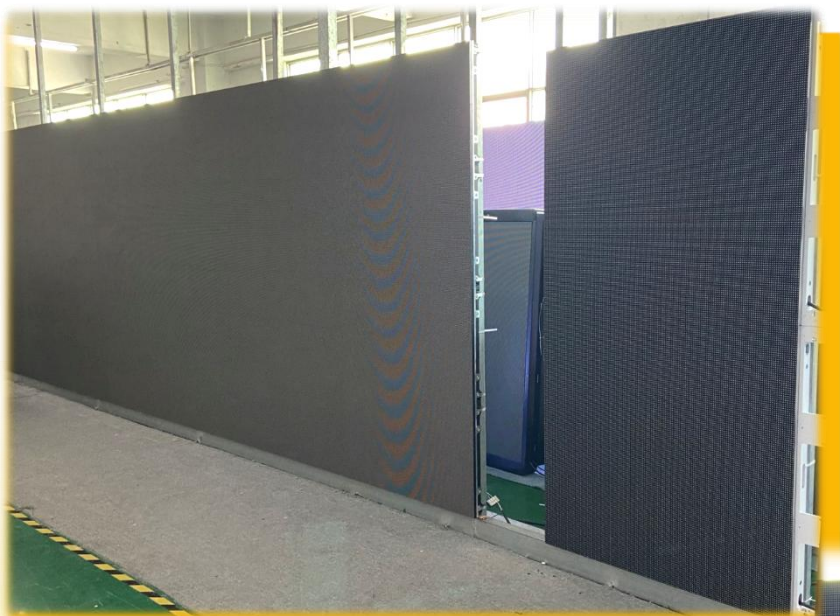
*weight is only 28kg*







*High contrast rate*



*contrast rate is from  
6000 to 9500:1*





***PART 3***  
***Project cases***

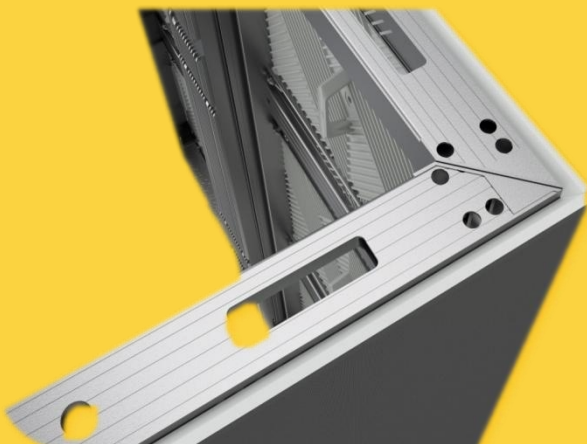
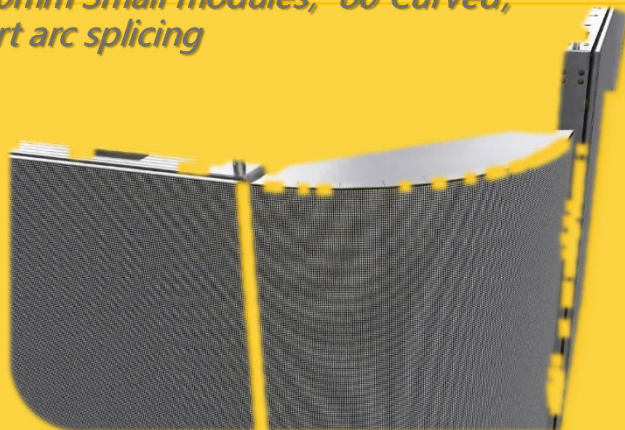




# Naked Eye 3D

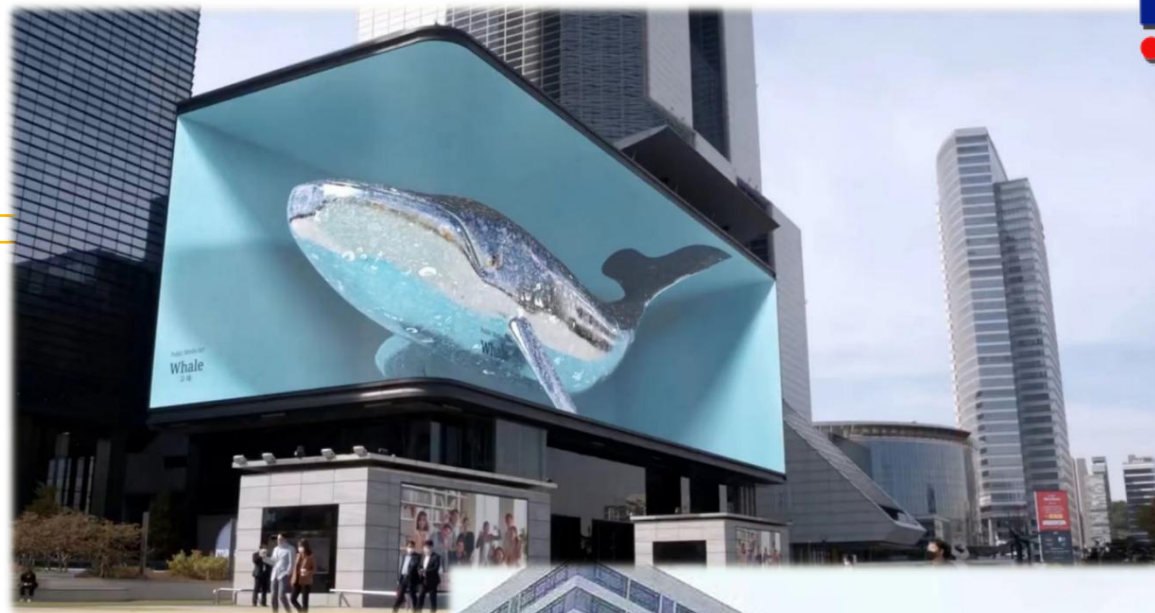


*40×320mm Small modules, 80°Curved,  
Support arc splicing*



*Curved module design, can make right angle splicing*

*Support arc & right  
angle splicing*





## *Product certification*



*Products in strict accordance with EMC ClassB design, Can get certification by CNAS etc. third-party*





# ***PART 4***

## ***Parameters***

Pixel Pitch	P4.44	P5.7	P6.66	P8	P10
LED Type	SMD1921	SMD2727	SMD2727	SMD2727	SMD2727
Physical Density (dots/m <sup>2</sup> )	50625	30625	22500	15625	10000
Module Resolution	108×72	84×56	72×48	60×40	48×32
Module Size (W×H)	480×320	480×320	480×320	480×320	480×320
Cabinet Size (mm)	960×960×77mm	960×960×77mm	960×960×77mm	960×960×77mm	960×960×77mm
Cabinet Resolution	216×216dots	168×168dots	144×144dots	120×120dots	96×96dots
Cabinet Weight(kg)	28kg	28kg	28kg	28kg	28kg
Maintenance Mode	Front and Back maintenance	Front and Back maintenance	Front and Back maintenance	Front and Back maintenance	Front and Back maintenance
Cabinet Material	Aluminum	Aluminum	Aluminum	Aluminum	Aluminum
Brightness	>6000cd/m <sup>2</sup>	>6500cd/m <sup>2</sup>	>6500cd/m <sup>2</sup>	>6500cd/m <sup>2</sup>	>6500cd/m <sup>2</sup>
Environmental	outdoor	outdoor	outdoor	outdoor	outdoor
Viewing angle	140°/140°	140°/140°	140°/140°	140°/140°	140°/140°
The best viewing distance	>4.44m	>5.7m	>6.66m	>8m	>10m
Drive Mode	1/9 Scan	1/7 Scan	1/6 Scan	1/4 Scan	1/2 Scan
Grey level	14 bit	14 bit	14 bit	14 bit	14 bit
Refresh Rate (Hz)	3840Hz	3840Hz	3840Hz	3840Hz	3840Hz
Max Power Consumption (W/m <sup>2</sup> )	650W/m <sup>2</sup>	650W/m <sup>2</sup>	650W/m <sup>2</sup>	650W/m <sup>2</sup>	650W/m <sup>2</sup>
Average Power Consumption (W/m <sup>2</sup> )	200W/m <sup>2</sup>	200W/m <sup>2</sup>	200W/m <sup>2</sup>	200W/m <sup>2</sup>	200W/m <sup>2</sup>
IP Grade	IP 65	IP 65	IP 65	IP 65	IP 65
Input Power	AC100-240V, 50/60 Hz				
Working Temperature/Humidity (°C/RH)	-20~50°C/10%~95%				
Storage Temperature/Humidity (°C/RH)	-20~50°C/10%~95%				
Operating Life	100,000hours				

***Thanks!***

