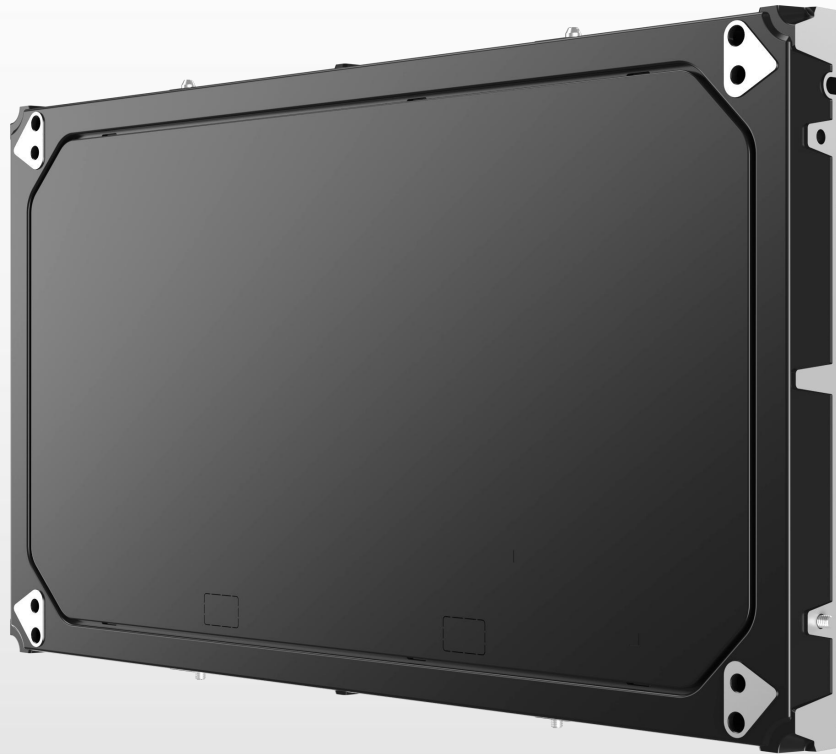


Three-view drawings of the cabinet



Brand new upgrade

Flatter

Newly added top column design for the cabinet, the whole screen The effect is flatter

More convenient

Optimized board layout space, more ergonomic, and more convenient to install

Lighter

Brand new design of the die-cast cabinet, compared with Weight reduction 8%



Double insurance

Newly added double inlet knockout holes, supporting Double power line input

More flexible

The back cover is detachable, allowing customers to customize it at will.

Safer

The pin definitions of the connectors in the circuit are redesigned with anti-misplug features, preventing board burnout due to reverse insertion from the source and ensuring zero installation errors for beginners.

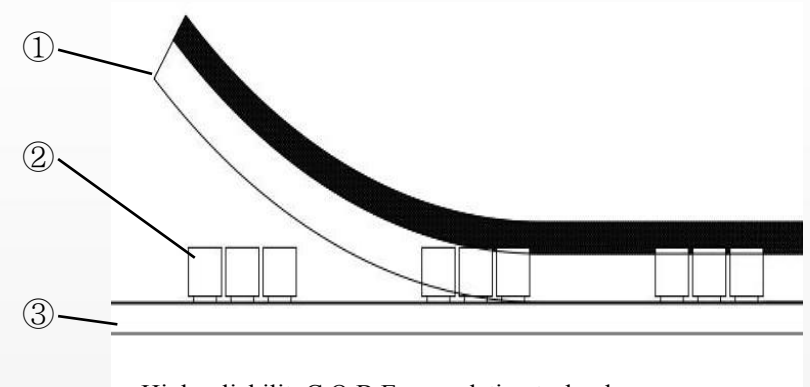
COB Technical analysis

-Product technology: Adopting Chip on Board chip-level packaging technology, multiple LED Chips Integrated and packaged on the substrate to form a high-pixel-density display unit

-Core principle:

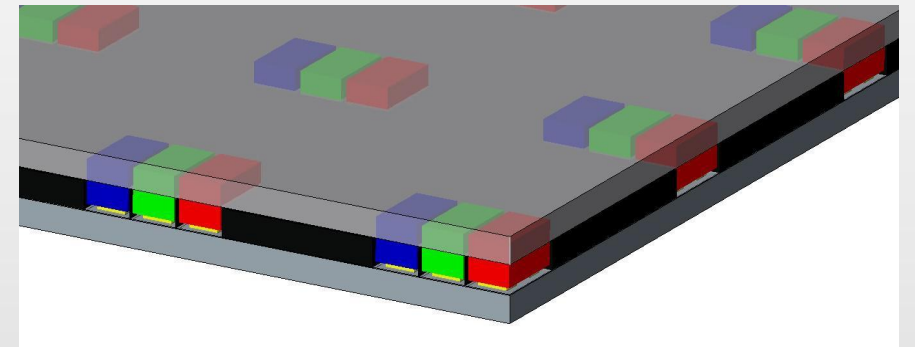
1、Molding encapsulation: The modified silicon is cured as a whole to achieve all-round protection for the chip

2、Full flip-chip technology: The chip is directly welded to the substrate to eliminate the defects of the gold wire process



High reliability COB Encapsulation technology:

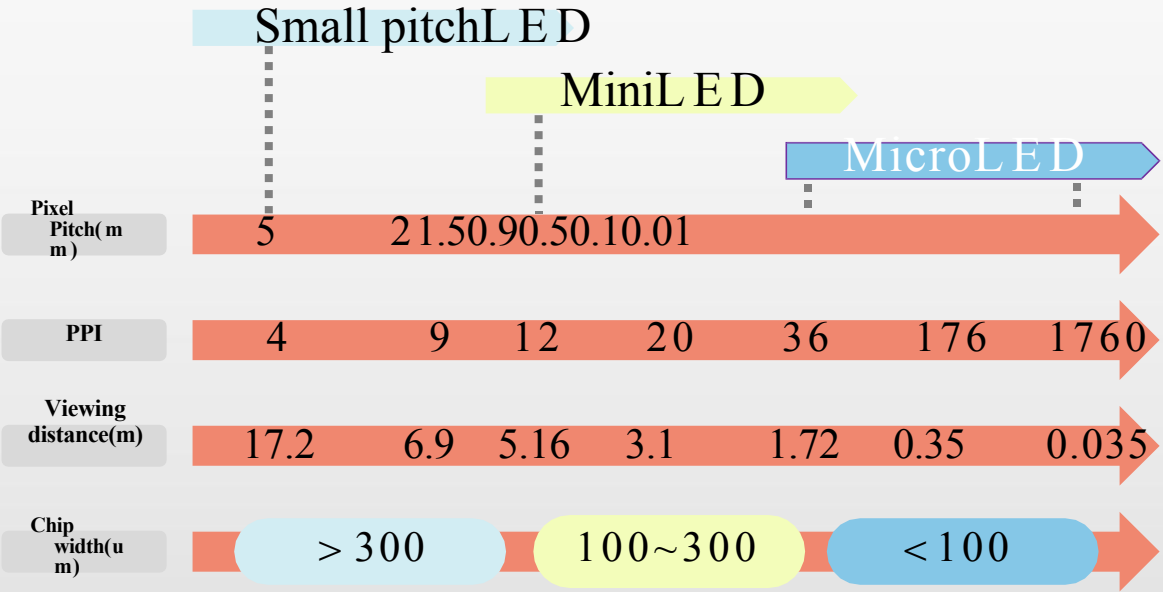
①) PET+UV Adhesive film ②) LED Chips ③) Substrate



II. Core Product Matrix

Meet the needs of different customers
and different solutions.

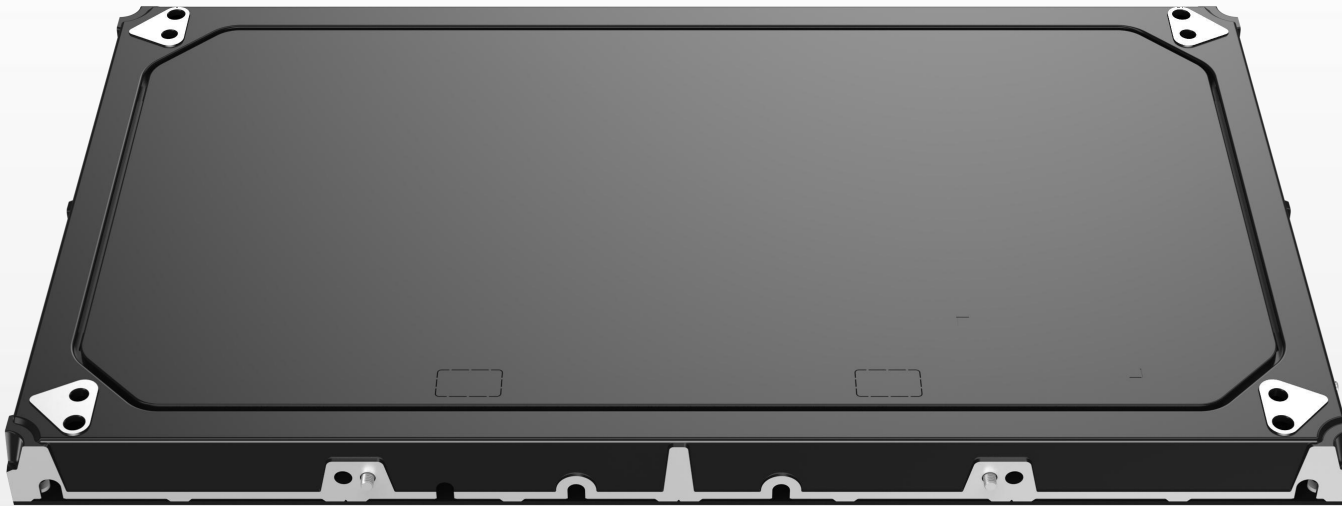
Pitch: P0.78/P0.93/P1.25/P1.56



Series	Hongping Second Generation		
Point pitch	P0.93	P1.25	P1.56
Single-box display resolution	640*360	480*270	384*216
C O B Lamp panel size(m m)	150*168.75		
C O B Lamp panel resolution	160*180	120*135	96*108
C O B Lamp panel surface technology	Matte finish		
C O B Total weight of the lamp panel	≈1.2Kg		
Dimensions of the finished cabinet(m m)	600*337.5*39.5mm		
Total weight of the finished cabinet	≈4.0/Kg	≈4.0/Kg	≈4.0/Kg
Pixel density (per/square meter)	1137777	640000	409600
Circuit scheme	Common cathode	Common anode	
FalshCorrection storage	Support		
White balance brightness(nit)	Typ600		
Refresh rateHz	3840&7680 (Customization required)		
Frame refresh rateHz	50/60&120(Customization required)		
Contrast ratio	20000:1		
Color temperature(K)	3000K -10000K (Adjustable)		
Viewing angle	Horizontal and vertical ≤170°		
Single cabinet power consumption at 600 nit	≤55W	≤48W	≤53W
Power consumption per square meter at 600 nit	≤275W/㎡	≤240W	≤265W
Maintenance method	Full front maintenance/Partial rear maintenance available		
Backup (Optional)	Dual cards, dual batteries, and dual power supplies		
Control system	Nova& Colorlight		
Certification	Compliance3C,E M C CLASS-A,C E ,R O H S , Energy-saving		

3. Ten core competencies

3.1, Flexible space, worry-free maintenance



Removable back cover, supporting customer customization;

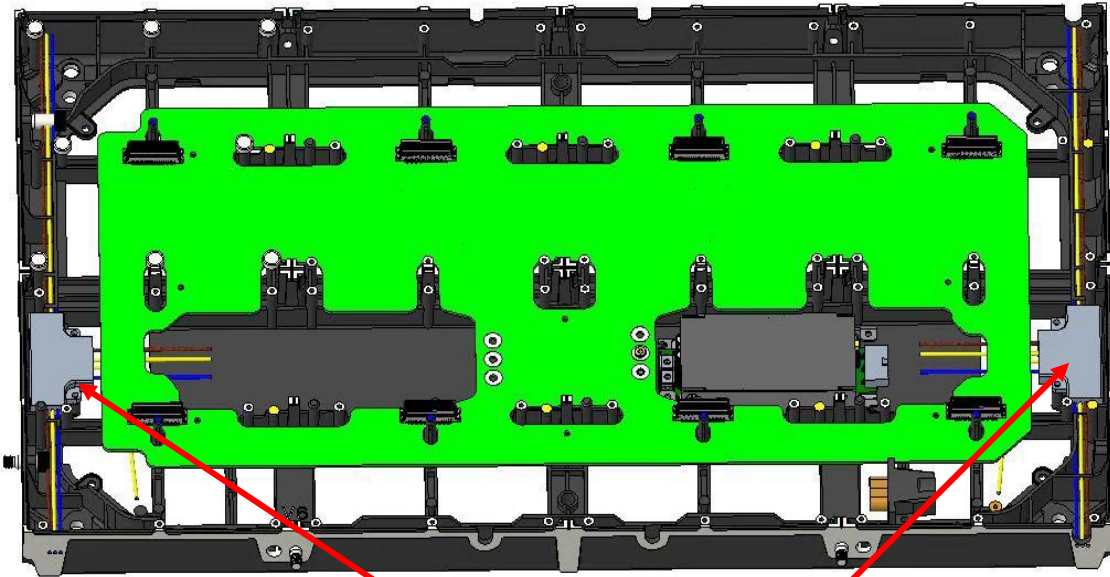
- Core advantage: Supports full front maintenance and partial rear maintenance without disassembly Remove the full screen

- Applicable scenarios: Narrow spaces/Embedded installation/Quick response maintenance

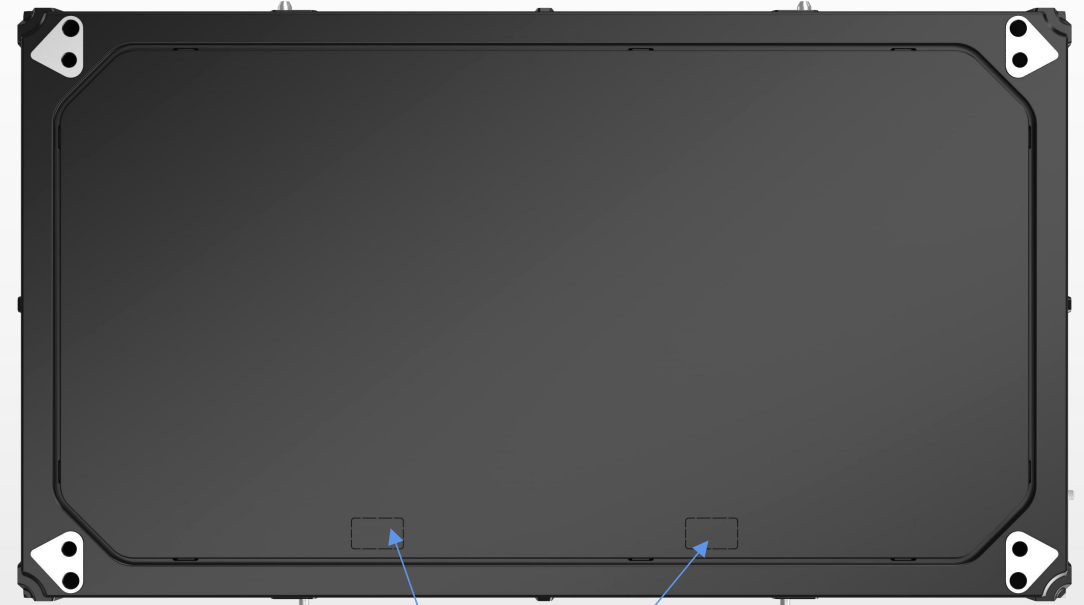
3. Ten core competencies

2. Double protection for stable online operation

1. Dual power inputs



Supports dual power line inputs

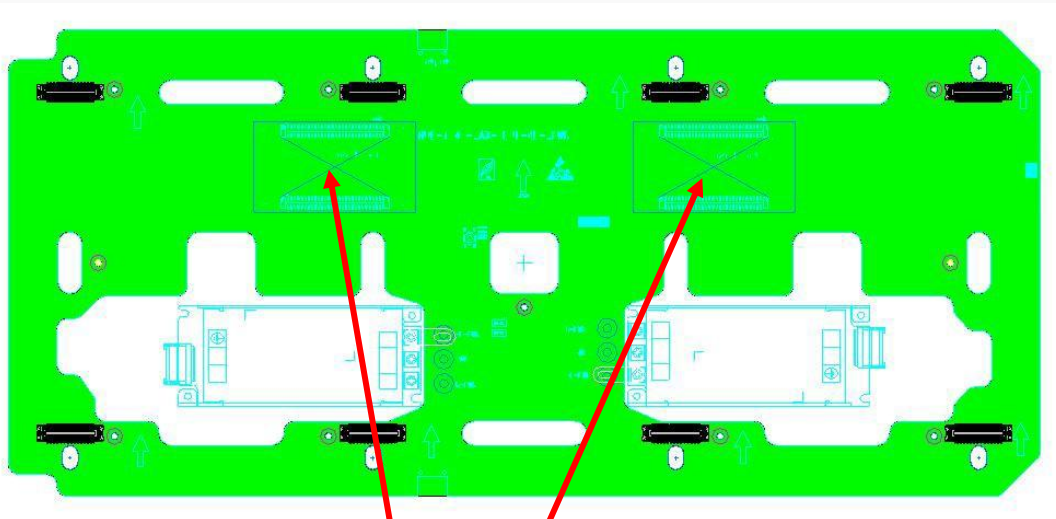


Incoming line
knockout holes

III. Ten core competitiveness

3.2, Double protection for stable online operation

3.2.2 Dual signal channels



Support dual receiving card backup

Independent dual signal channel design

It adopts an independent dual signal channel design. The two signal channels are independent of each other without interference. Even if one signal channel fails, the other can still transmit signals normally, ensuring the stability of signal transmission.

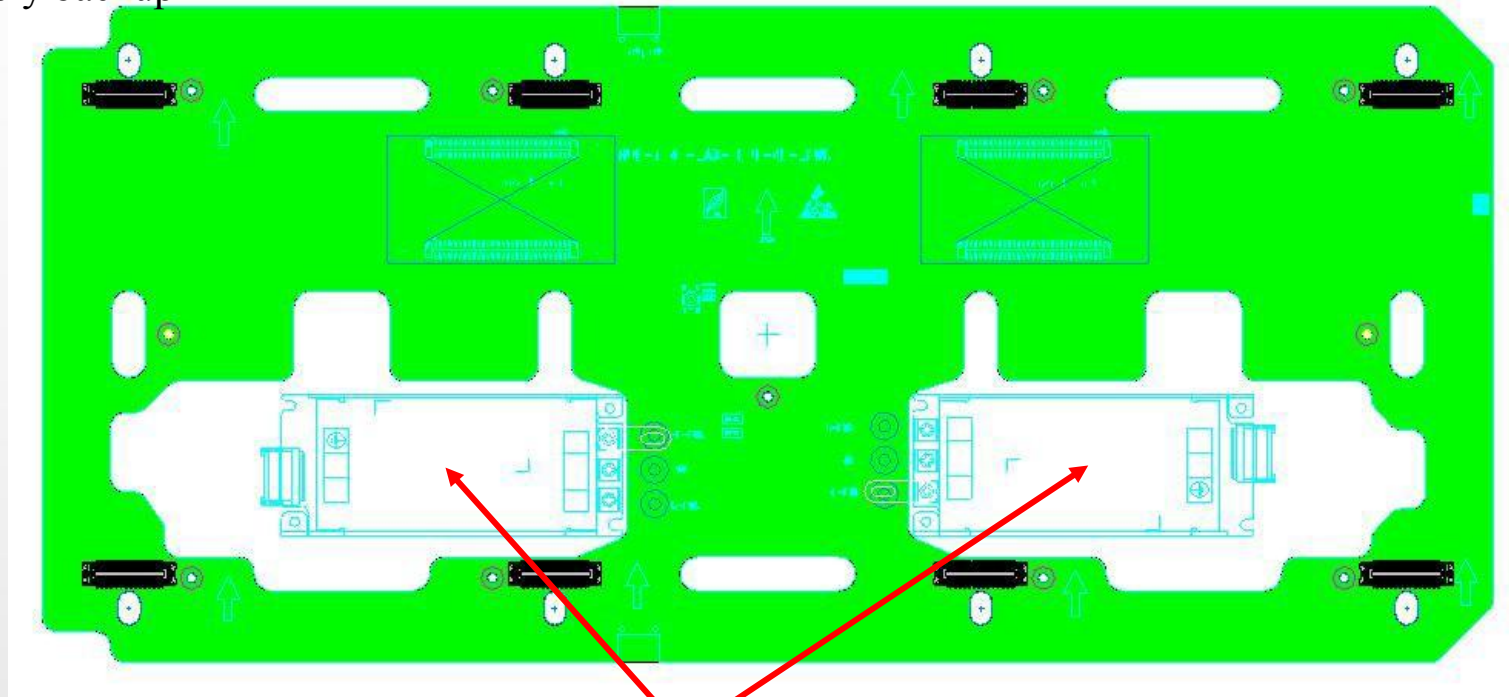
INTELLIGENT SWITCHING FUNCTION

When a fault is detected in the signal channel, the system can automatically perform intelligent routing switching, switching the signal transmission to the normal signal channel to ensure the continuity of signal transmission.

III. Ten core competitiveness

3.2、Dual protection, stable online

3.2.3Dual power supply backup



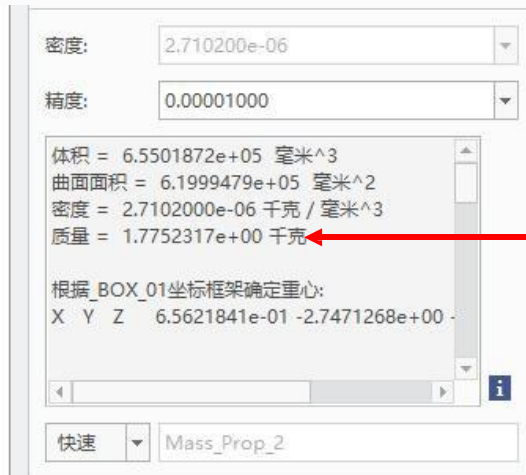
It supports dual power supply backup. A single-point fault does not affect the overall operation and is suitable for high-reliability scenarios (such as command centers and studios)

III. Ten core competitiveness

3.3、Lighter·Smaller·More flexible



600*337.5*37.5mm



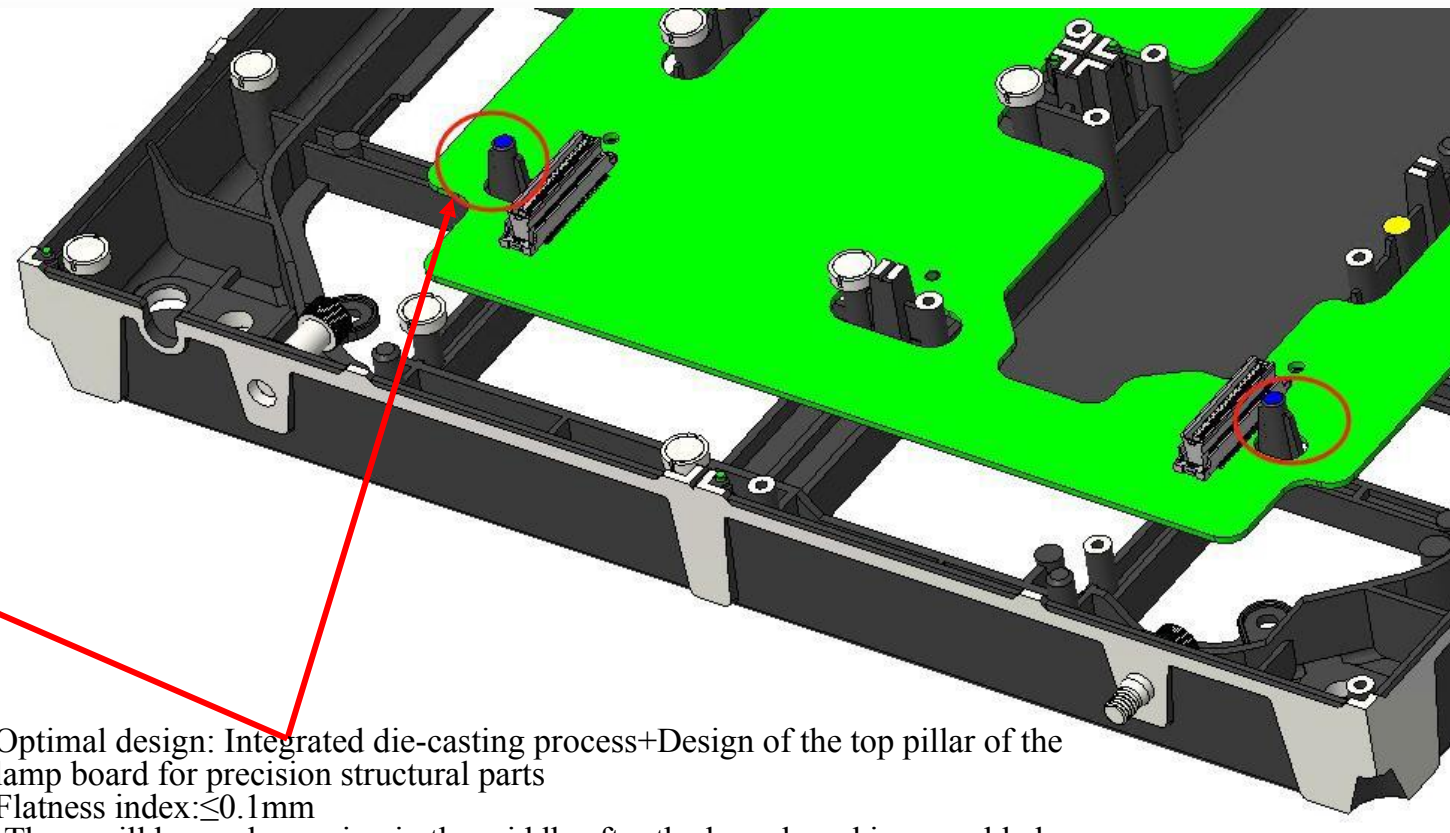
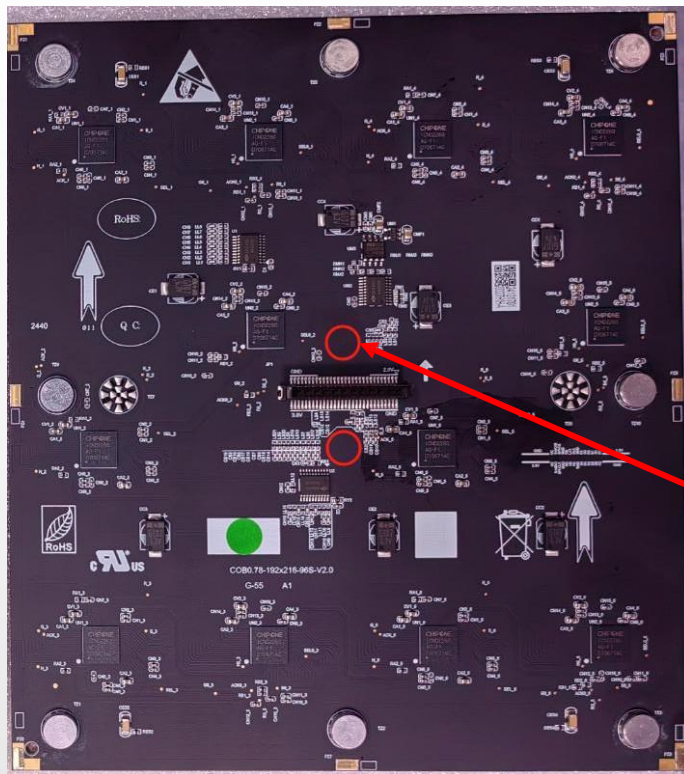
Total weight of
the die-cast box
1.78Kg

Data comparison: Compared with the traditional SMD, the box weight is reduced 30% and the thickness is reduced 40%.

-Application advantages: Save transportation costs and improve installation efficiency

III. Ten core competitiveness

3.4, Seamless splicing, a visual feast

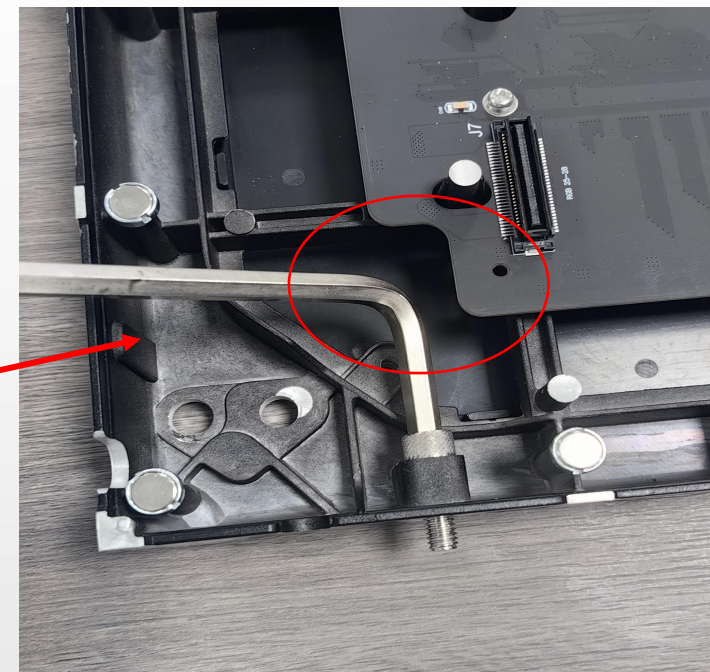
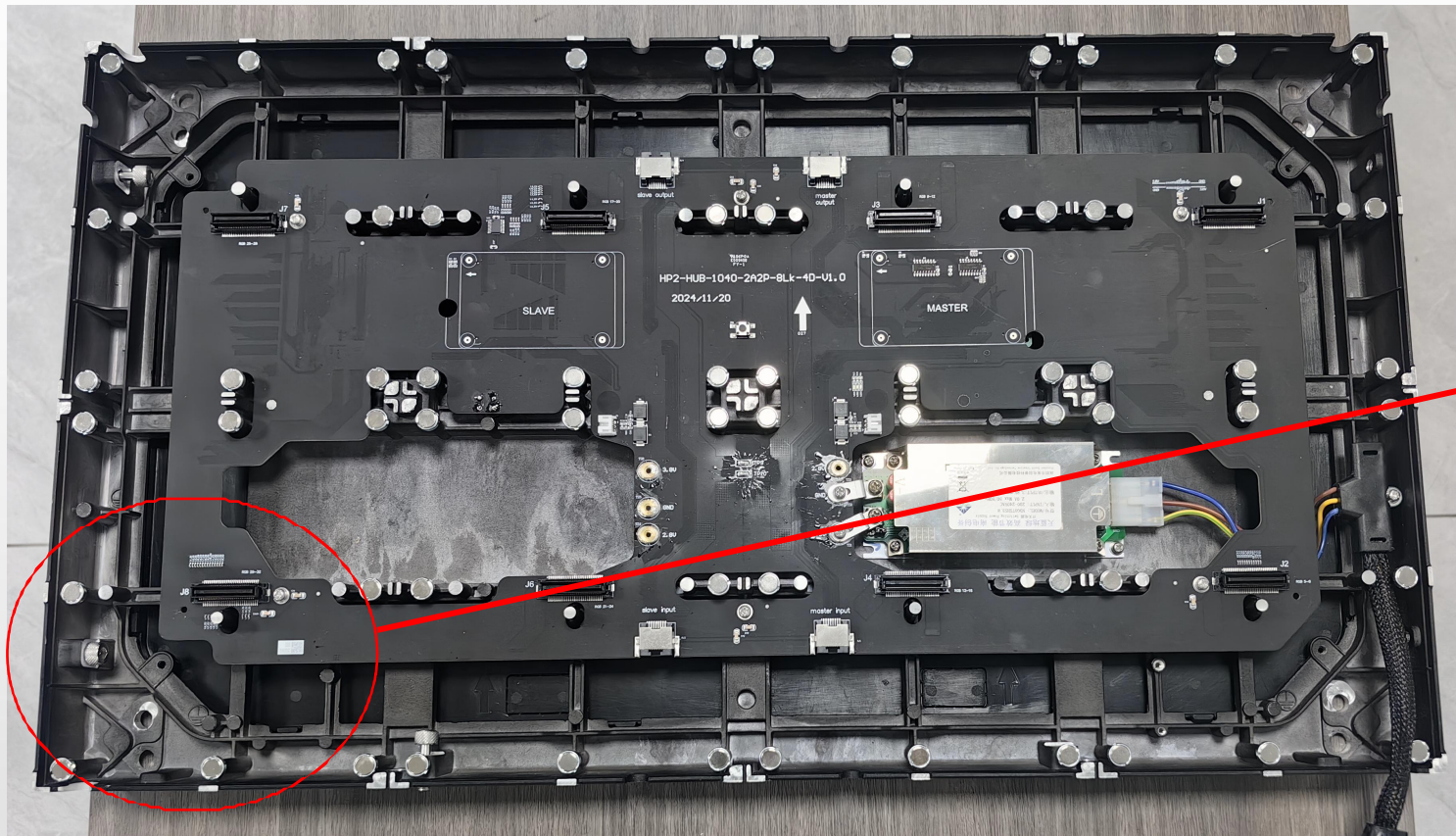


- Optimal design: Integrated die-casting process+Design of the top pillar of the lamp board for precision structural parts
- Flatness index: $\leq 0.1\text{mm}$
There will be no depression in the middle after the lamp board is assembled.

III. Ten core competitiveness

5. Simplify complexity and deploy easily

1. Redundant installation positions for screw holes

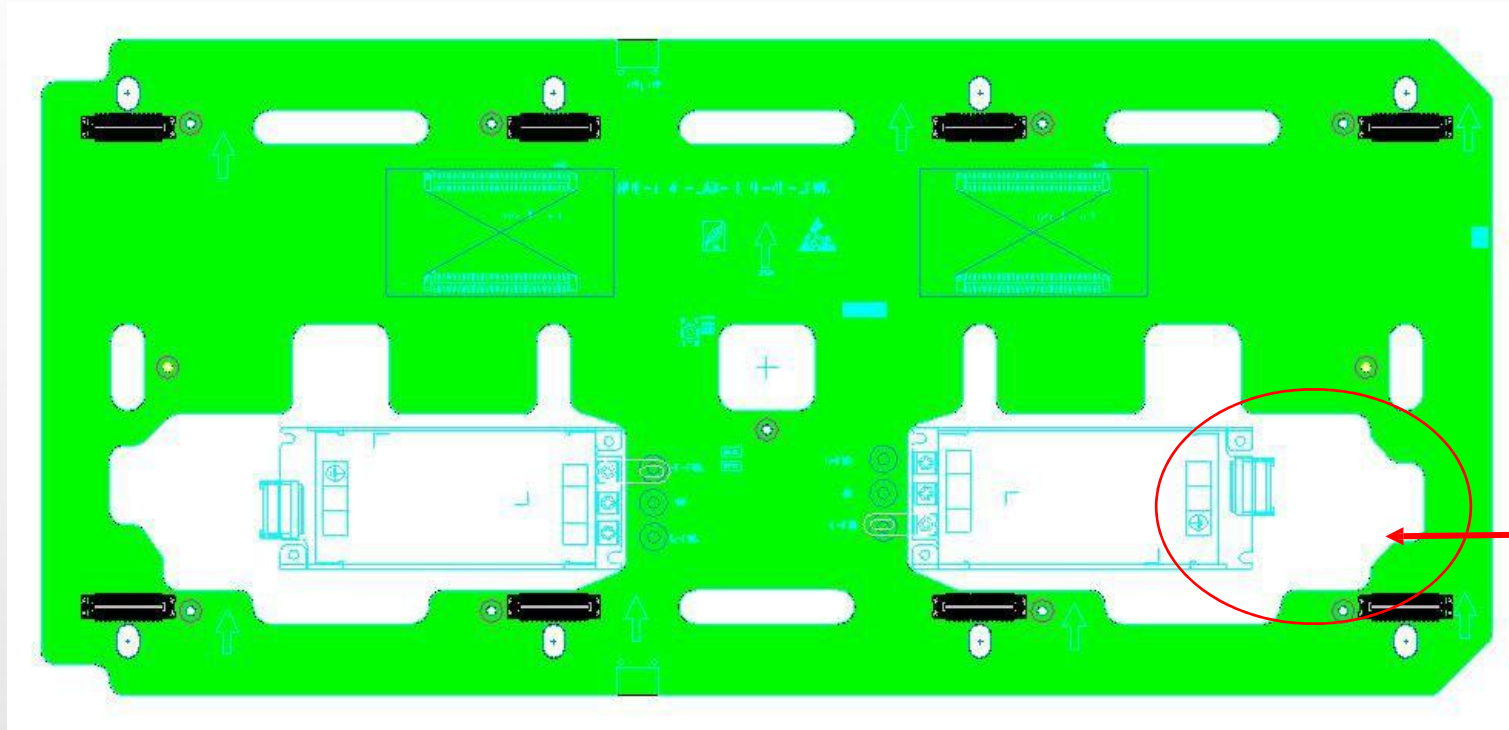


更贴合人体工学设计，轻松安装

III. Ten core competitiveness

3.5 Simplify complexity and deploy easily

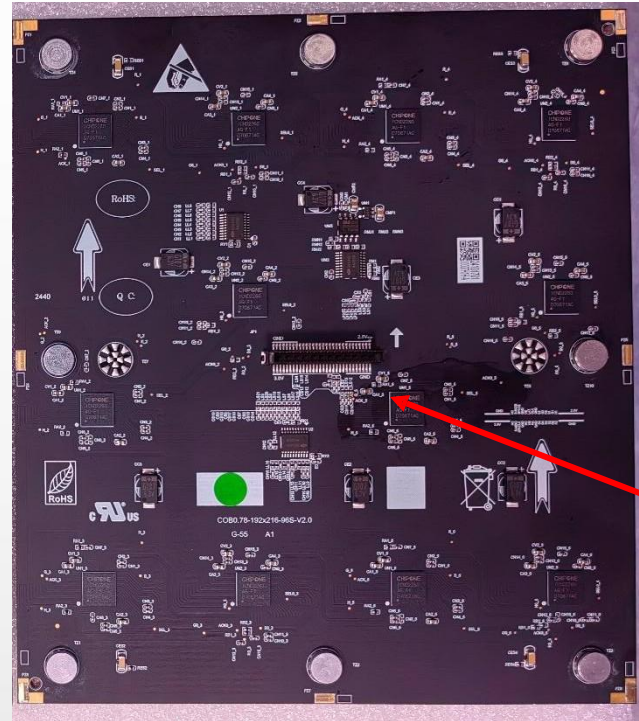
3.5.2 Redundant installation positions for the power supply



Optimize the board layout space for convenient plugging and unplugging

Three: Ten core competitiveness

3.6Anti - fooling circuit design for safe installation



The pin definition of the lamp board connector is a foolproof design. 100% Eliminate the risk of board burning caused by reverse installation, even for beginners. Zero installation errors.

3. Ten core competencies

3.7、 Universal design, no worries about stock preparation

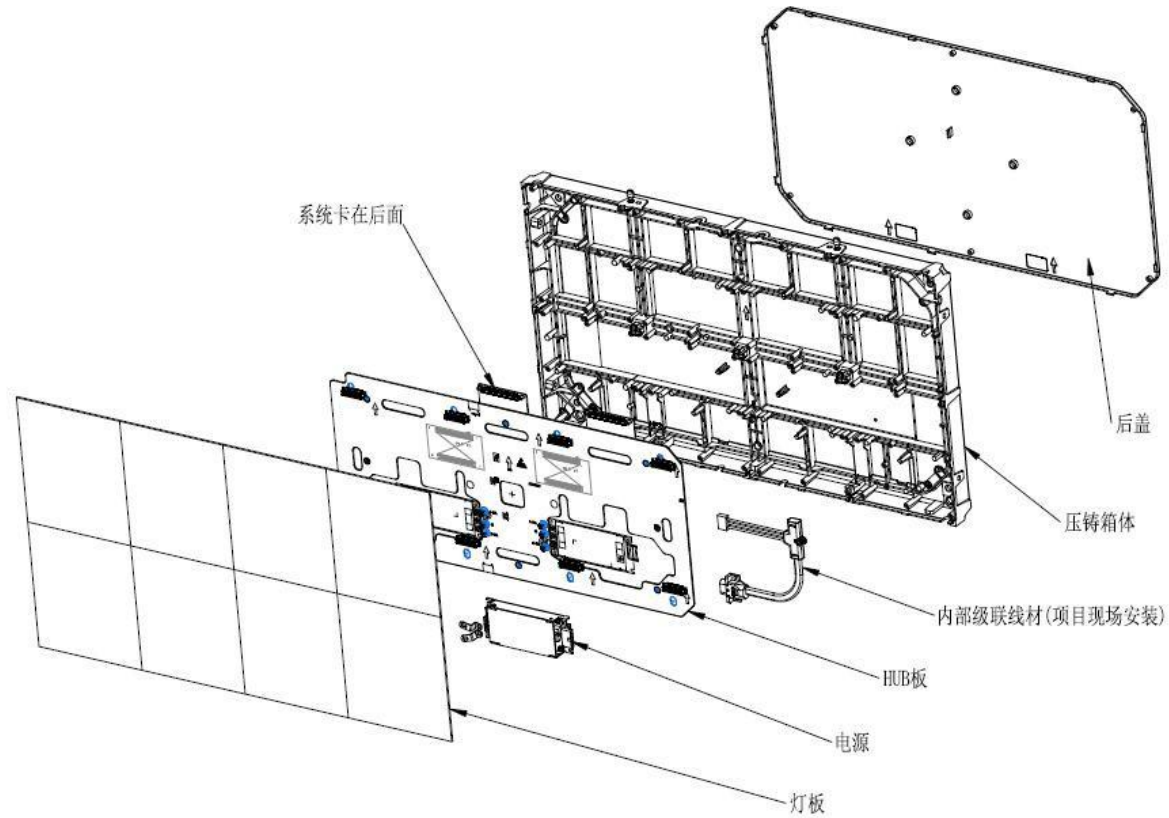


No worries about inventory: The modules do not distinguish between A/B boards and can be stocked in bulk.

- Inventory innovation: The whole series of modules are designed to be universal, without A/B board distinction, reducing the SKU by 50%.
- Supply chain advantage: The emergency response time for projects is shortened to 24 hours.

3. Ten core competencies

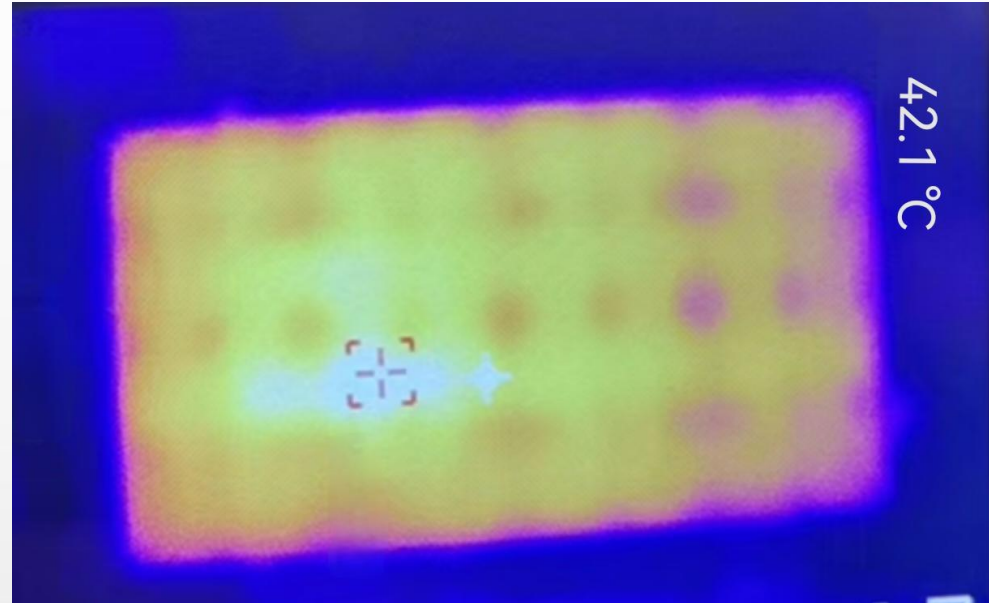
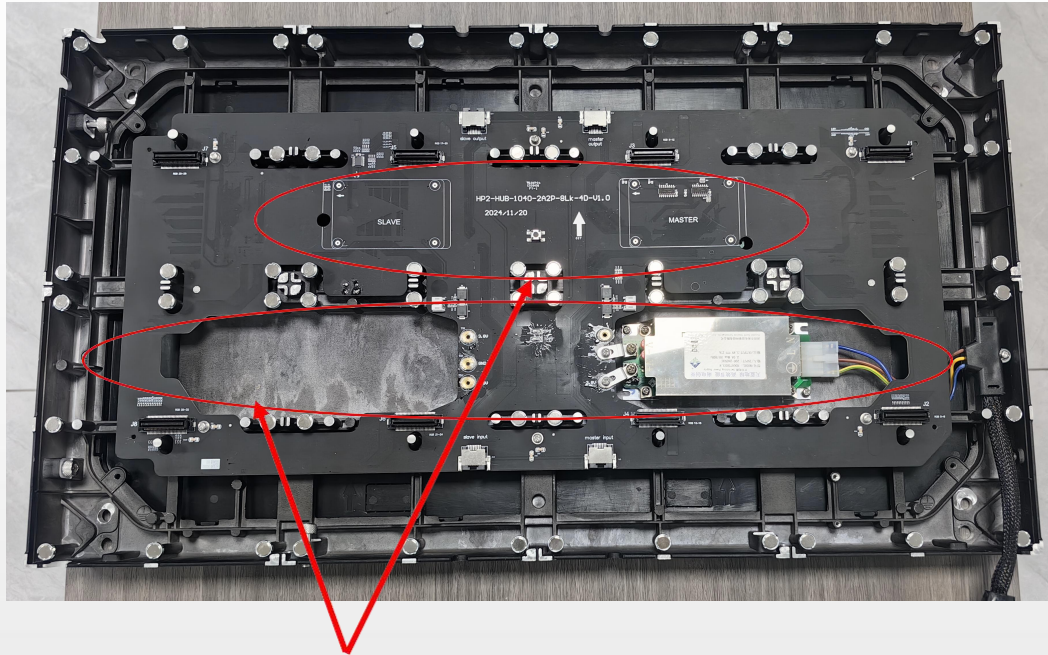
3.8、 Discrete design, zero pressure on maintenance



- Power supply/HUB/Independent module of receiving card
- Maintenance cost: Replacement time of a single module < 5minutes

III. Ten Core Competencies

3.9、 Low-temperature heat equalization, intelligent display of the future



The system card is placed on the back of the box, and the power supply is designed close to the die-cast box, which improves the heat dissipation efficiency, avoids the temperature rise of the module caused by excessive heat generation of the system card and the power supply, distributes the heat more evenly, and eliminates the local...local of the module caused by heat"Slightly bluish or slightly reddish"Phenomenon

III. Ten Core Competencies

3.10, Open and Compatible, with Intelligent Interconnection



- Supported control systems:
Nova, Colorlight

- Advantages: Reduce the user's
system migration costs and be
compatible with existing devices

IV. Full-scenario Application Solutions

Commercial
Display

Command and
Control

Audio-visual
Conference

Virtual
Performance



Web: www.kmtekled.com

Mail: info@kmtekled.com sales@kmtekled.com

Tel: 0086-755-27648736

Fax: 0086-755-27648736

Address: 4th Building, The 2nd inudstry Park Of
Nangang. Songbai Rd 1026, Xili,
Nanshan, Shenzhen, China - Postcode:518055

