

FA3

The world's smallest Indoor panel-P1.9,
P2.6, P2.9, P3.9



Die-casting Aluminum



Light and Thin



Wide Viewing Angle



Flexible Installations



Excellent Performance



13bits ~ 24bits



1920Hz ~ 3840Hz

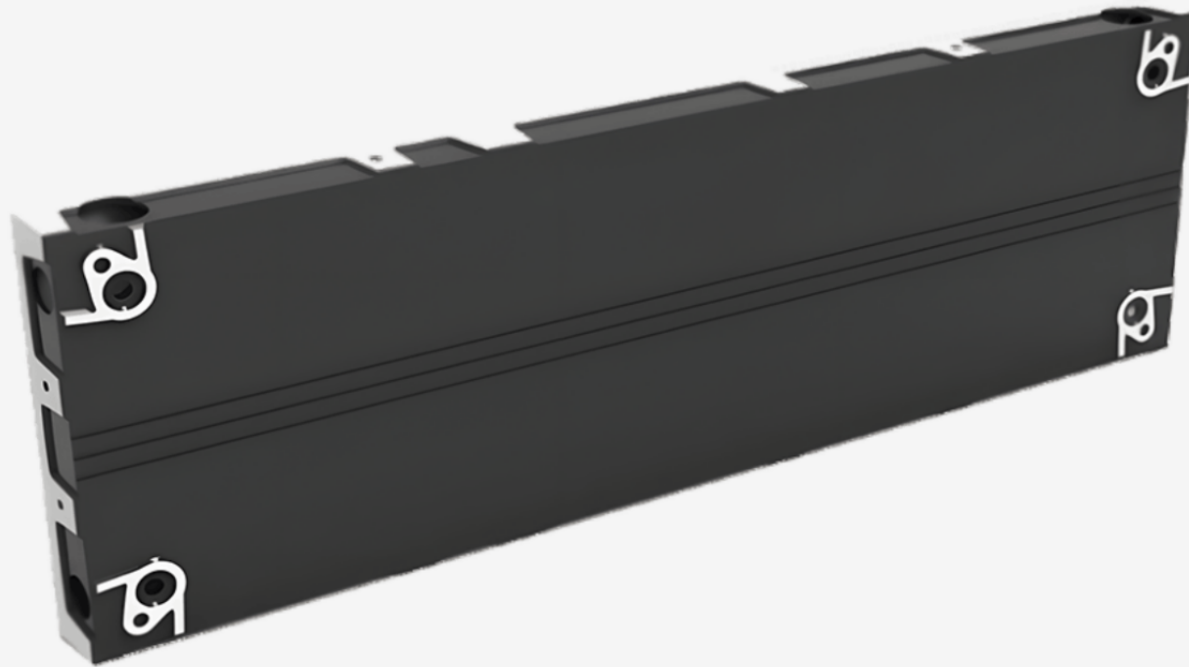


Fully Front Access

Product Description

Die-Casting Aluminum Design

As customers have higher requirements for LED displays, more and more cabinets have been developed to meet market demands. Compared with the traditional bulky cabinet, the die-casting aluminum cabinet with humanized design is stronger, more light-weight and precise. This LED panel is highly praised for better user experience. The pixel pitches of this LED screen are SMD P1.9, P2.6, P2.9 and P3.9.



Front Access Design

All electrical components: power supply, receiving card, and data cable are easily accessed from the front of the FA3 LED display. This design feature allows for direct wall mount installation.

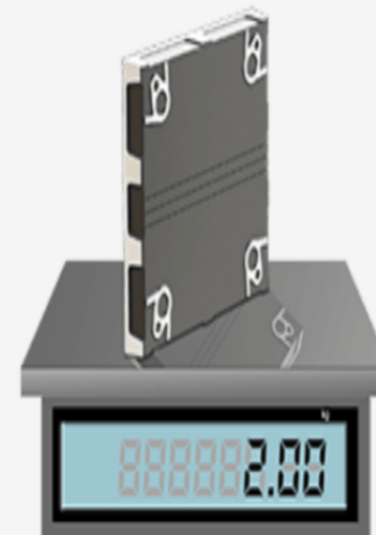


Ultra-thin and ultra-light features

The FA3 LED display cabinet is 42mm (1.65") thick. The LED display cabinet options weigh 5.5kgs (12.1lbs) or 2kgs (4.4lbs). Cabinet depth: 42mm only. It is one of the thinnest cabinets in the prevailing market, more cost-effective in installation space and steel structure.



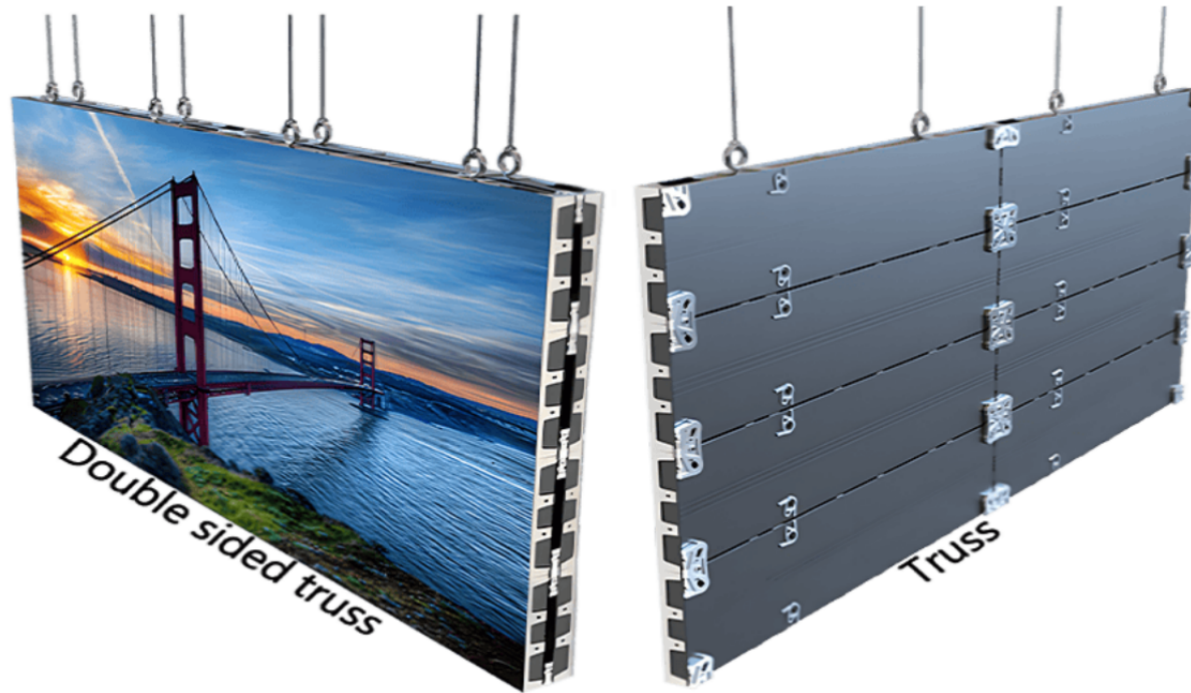
1,000mm×250mm cabinet weight: 5.5kg



250mm×250mm cabinet weight: 2kg

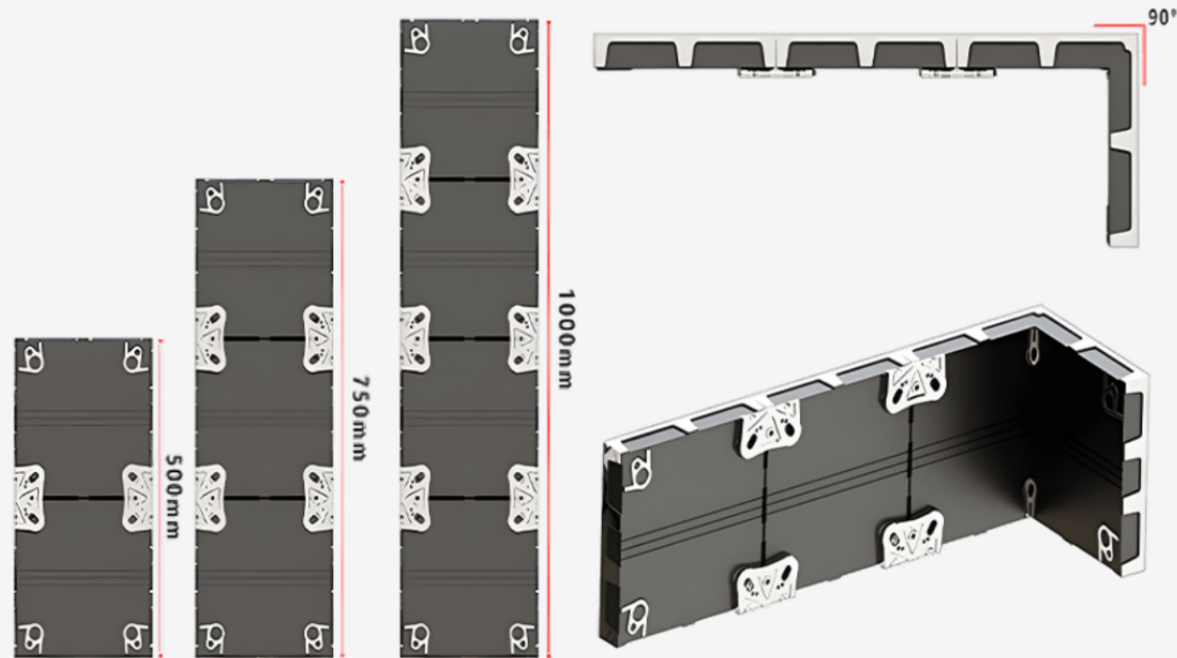
Flexible Installations

Thanks to the excellent cabinet structure design, the installation method is flexible, and the screen can fit well into different projects.



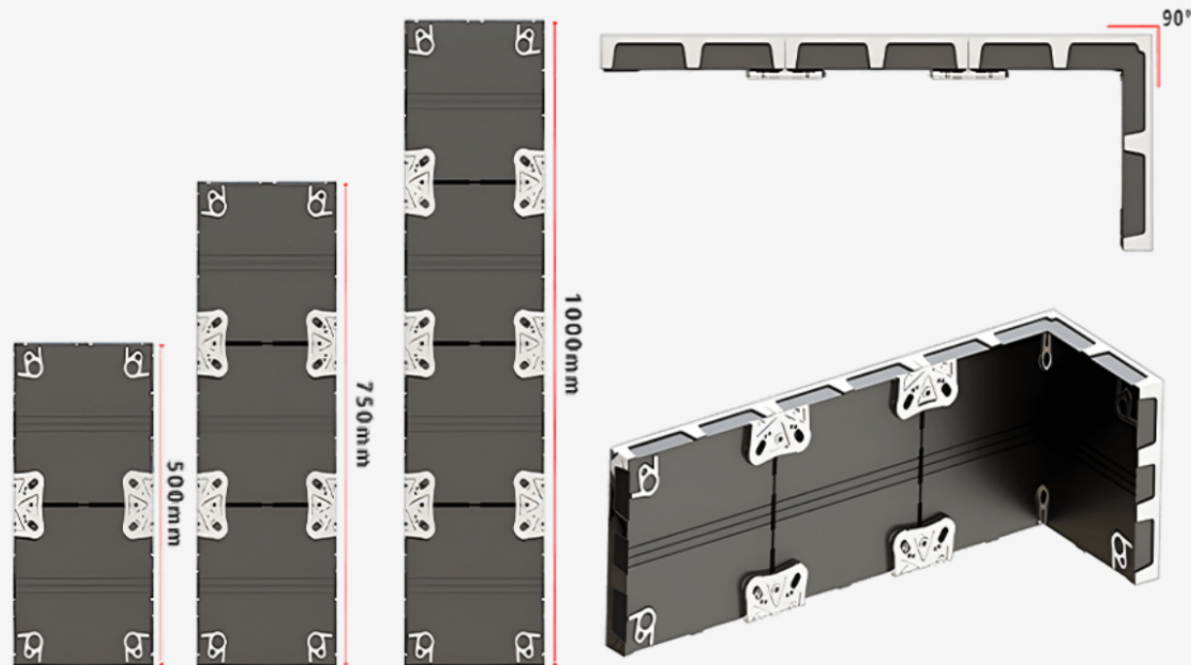
Alternative cabinet size options

The FA3 LED display cabinet is available in two sizes: 1,000mm (39.4") x 250mm (9.8") or 250mm (9.8") x 250mm (9.8"). This world's smallest cabinet size provides flexibility when selecting your final LED display size. The FA3 LED display cabinets can be assembled at seamless 90° angles.



Alternative cabinet size options

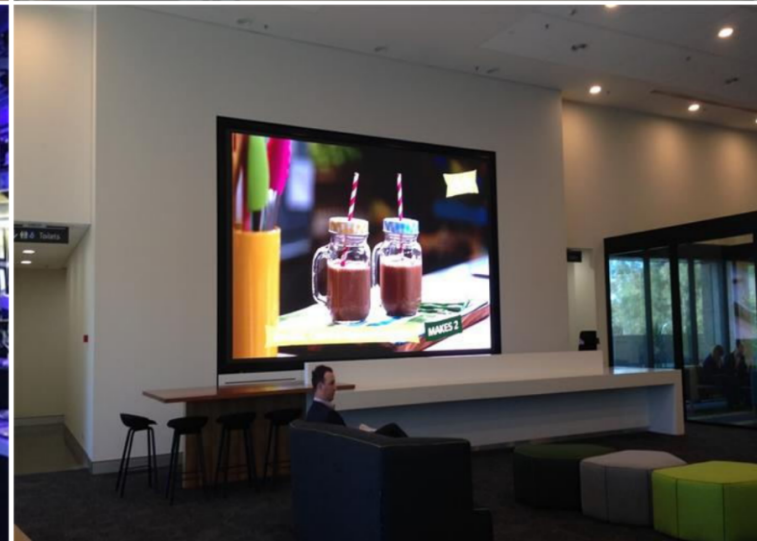
The FA3 LED display cabinet is available in two sizes: 1,000mm (39.4") x 250mm (9.8") or 250mm (9.8") x 250mm (9.8"). This world's smallest cabinet size provides flexibility when selecting your final LED display size. The FA3 LED display cabinets can be assembled at seamless 90° angles.



Application Fields

This indoor LED panel is usually be used for:

Fashion shop; Meeting room video wall; Church digital screen; Indoor advertising; Airport, etc.



Parameter

Spec1Spec2Spec3

| Item | P1.9 | P2.6 | P2.9 | P3.9 |
|-----------------------------|--|--|--|--|
| Pixel Pitch | 1.953mm | 2.604mm | 2.976mm | 3.906mm |
| LED Type | SMD1515/ SMD1415(outdoor) | SMD1515 / SMD1415(outdoor) | SMD2020 / SMD1415(outdoor) | SMD2020 / SMD1921(outdoor) |
| Module Resolution | 128dots x128dots | 96dots x 96dots | 84dots x 84dots | 64dots x 64dots |
| Driving Mode | 1/32scan | 1/32scan | 1/28scan | 1/16scan |
| Module Pixels | 1,6384dots | 9,216dots | 7,056dots | 4,096dots |
| Module Size | 250mm x 250mm | 250mm x 250mm | 250mm x 250mm | 250mm x 250mm |
| Cabinet Size | 1000mm x 250mm or 250mm x 250mm or 750mm x 250mm | 1000mm x 250mm or 750mm x 250mm or 250mm x 250mm | 1000mm x 250mm or 250mm x 250mm or 750mm x 250mm | 1000mm x 250mm or 250mm x 250mm or 750mm x 250mm |
| Cabinet Resolution | 512dotsx 128dots or 128dotsx 128dots | 384dotsx 96dots or 96dotsx 96dots | 336dotsx 84dots or 84dotsx 84dots | 256dotsx 64dots or 64dotsx 64dots |
| Pixel Density | 262,144dots/m ² | 147,456dots/m ² | 112,896dots/m ² | 65,536dots/m ² |
| Minimum Viewing Distance | ≥1.9 m | ≥2.6 m | ≥2.9 m | ≥3.9m |
| Brightness | 800nits ~ 1,200nits / 2,000nits | 800nits ~ 1,200nits / 2,000nits | 800nits ~ 1,200nits / 2,000nits | 800nits ~ 1,200nits / 2,000nits |
| IP Grade | IP43 | IP43 | IP43 | IP43 |
| Refresh Rate | 1,920Hz ~ 3,840Hz | 1,920Hz ~ 3,840Hz | 1,920Hz ~ 3,840Hz | 1,920Hz ~ 3,840Hz |
| Gray Scale | 14bits ~ 24bits | 14bits ~ 24bits | 14bits ~ 24bits | 14bits ~ 24bits |
| Viewing Angle | H:110° / V:110° | H:110° / V:110° | H:110° / V:110° | H:110° / V:110° |
| Maximum Power Consumption | 500W/ m ² | 450W/ m ² | 350W/ m ² | 300W/ m ² |
| Average Power Consumption | 160W/ m ² | 150W/ m ² | 115W/ m ² | 100W/ m ² |
| Screen Lifespan | ≥100,000 hours | ≥100,000 hours | ≥100,000 hours | ≥100,000 hours |
| Input Voltage | AC110V - AC220V @ 50Hz/60Hz | AC110V - AC220V @ 50Hz/60Hz | AC110V - AC220V @ 50Hz/60Hz | AC110V - AC220V @ 50Hz/60Hz |
| Operating Temperature | - 20°C ~ 50°C | - 20°C ~ 50°C | - 20°C ~ 50°C | - 20°C ~ 50°C |
| Operating Humidity | 10% ~ 90% | 10% ~ 90% | 10% ~ 90% | 10% ~ 90% |
| Cabinet Material | Die-casting Aluminum | Die-casting Aluminum | Die-casting Aluminum | Die-casting Aluminum |
| Cabinet Weight | 5.5kg/panel | 5.5kg/panel | 5.5kg/panel | 5.5kg/panel |
| Operating System | Windows (Win7, Win10, etc.) | Windows (Win7, Win10, etc.) | Windows (Win7, Win10, etc.) | Windows (Win7, Win10, etc.) |
| Signal Source Compatibility | DVI,HDMI1.3,DP1.2,SDI,HDMI2.0,etc. | DVI,HDMI1.3,DP1.2,SDI,HDMI2.0,etc. | DVI,HDMI1.3,DP1.2,SDI,HDMI2.0,etc. | DVI,HDMI1.3,DP1.2,SDI,HDMI2.0,etc. |