

**Make your products
no longer difficult to sell**

Welcome to the "New Retail" era

**LED display screen
for shelves**



LED Shelf Screen

1. Product Description

This product is a synchronous and asynchronous shelf screen, which can be used for debugging, uploading programs, editing programs, etc. via USB, wifi, 4G, and network ports. The screen adopts GOB encapsulation technology, which is different from the traditional SMD surface-mount encapsulation. This technology effectively improves the reliability, light color and protection performance of LED display screens. Mainly used in supermarkets, flagship stores, banks, airports, high-speed rail stations and other commercial display application scenarios.

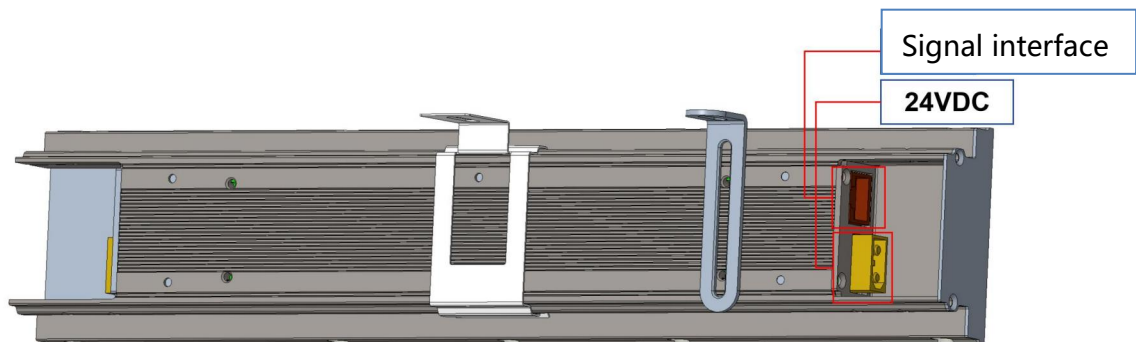
1.1 Application Scope

This technical specification is only applicable to KMT LED Shelf Screen Series.

1.2 Features

- Synchronous and asynchronous control: USB, Wi-Fi, 4G, network etc.
- 24V low voltage power, low power consumption, support power adapter (the screen length longest to 4.8 meters).
- Universal standardized profiles aluminum material, the size is 300mm*60mm, seamlessly assembled.
- The Horizontal and horizontal viewing angle of light can reach 170 degrees, wider than SMD screen.
- High refresh rate and low gray, refresh rate $\geq 3840\text{HZ}$, grey scale 14Bit.
- Excellent heat dissipation and low light decay, PCB board dissipate heat directly, extended service life.
- The screen face IP30, dust-proof, anti-oxidation, anti-static, anti-impact.
- Small size, light weight, compact and portable, plug and play.
- The installation methods are diversified and widely used in various indoor places, give you a different visual experience.

2. Interface Description





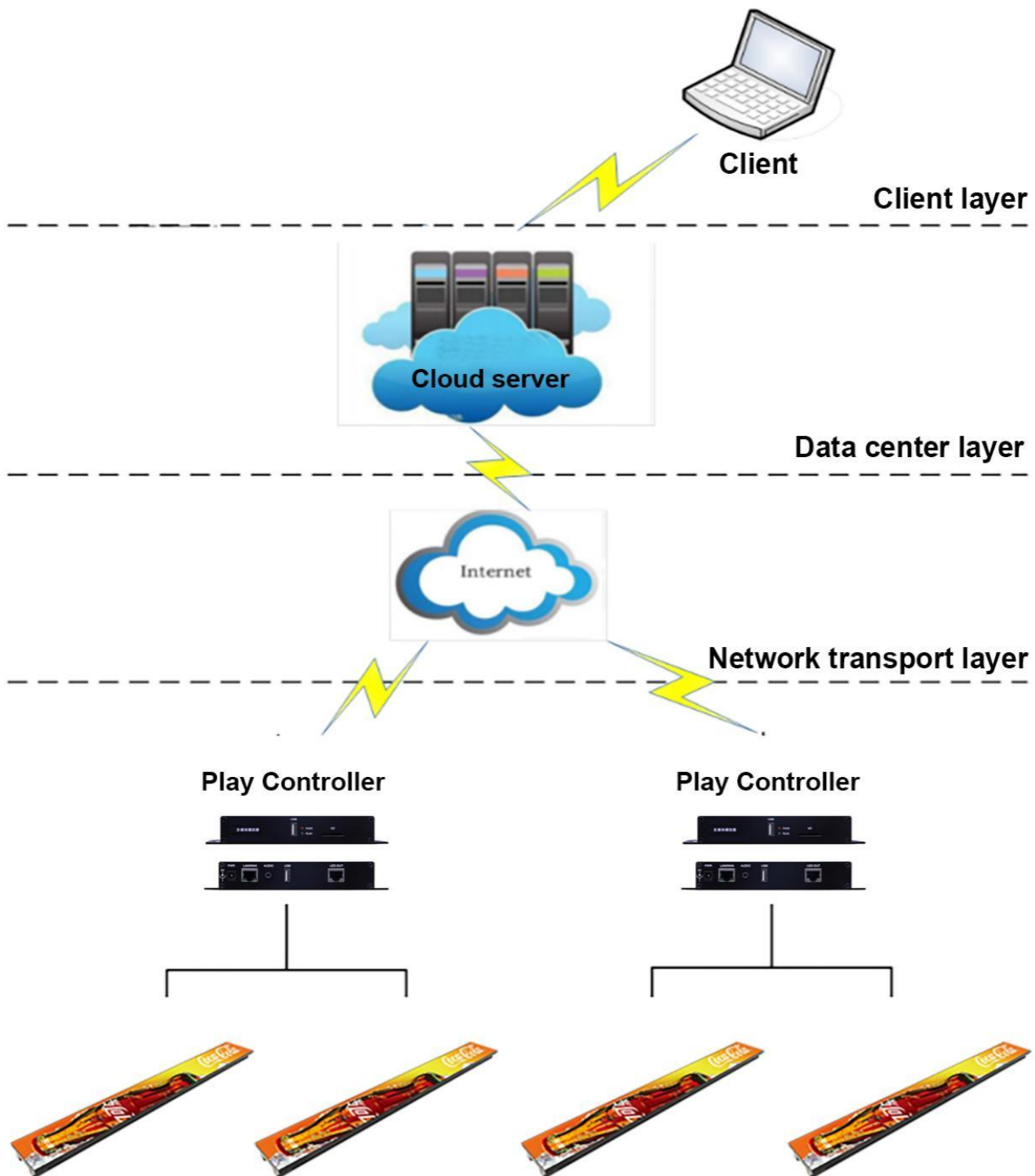
Synchronous/Asynchronous control



**Support multiple input methods,
easily switch screens through mobile phone/tablet/computer**

**Rich sockets and plug-and-play,
Convenient for changing playback content**

Cluster cloud control

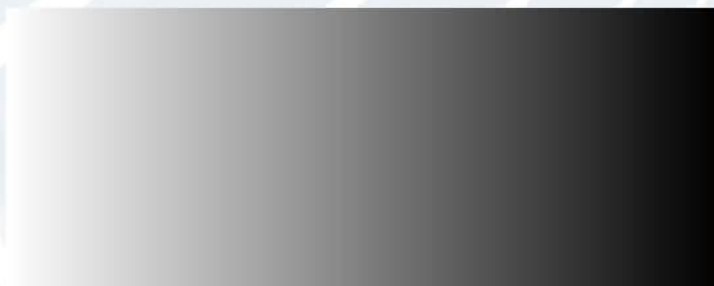


Excellent picture quality, more powerful marketing.

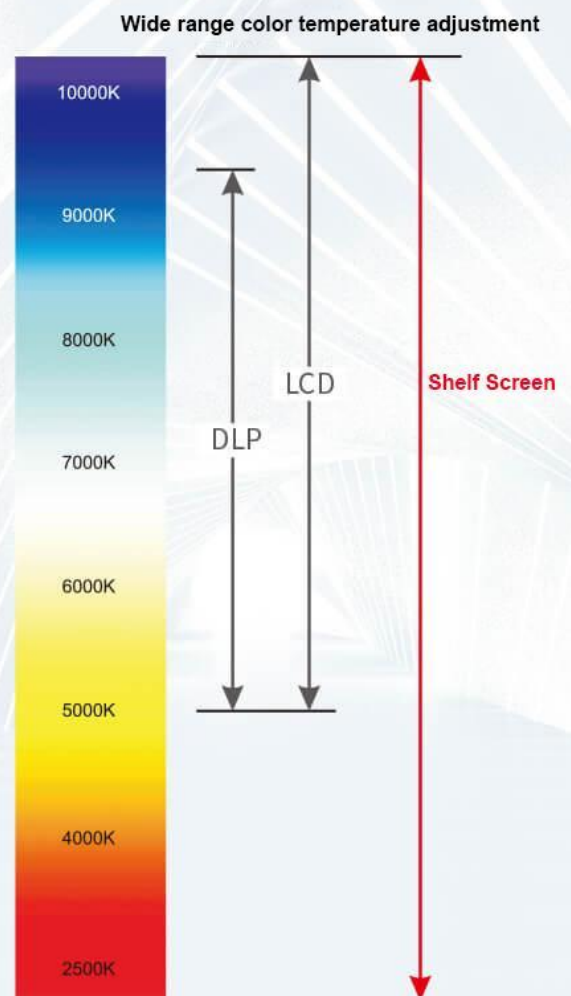
**High refresh rate, high contrast, wide color gamut,
and adjustable intelligent color temperature.**



Common products



LED Shelf Screen



Dynamic pricing / cross-selling / precision marketing

The prices of shelf merchandise are updated promptly, accurately, and effectively. Shelf merchandise can be easily bundled with other merchandise for cross-selling, creating new channels for profit sources.

Flexible and seamless splicing, to adapt to a variety of shelves

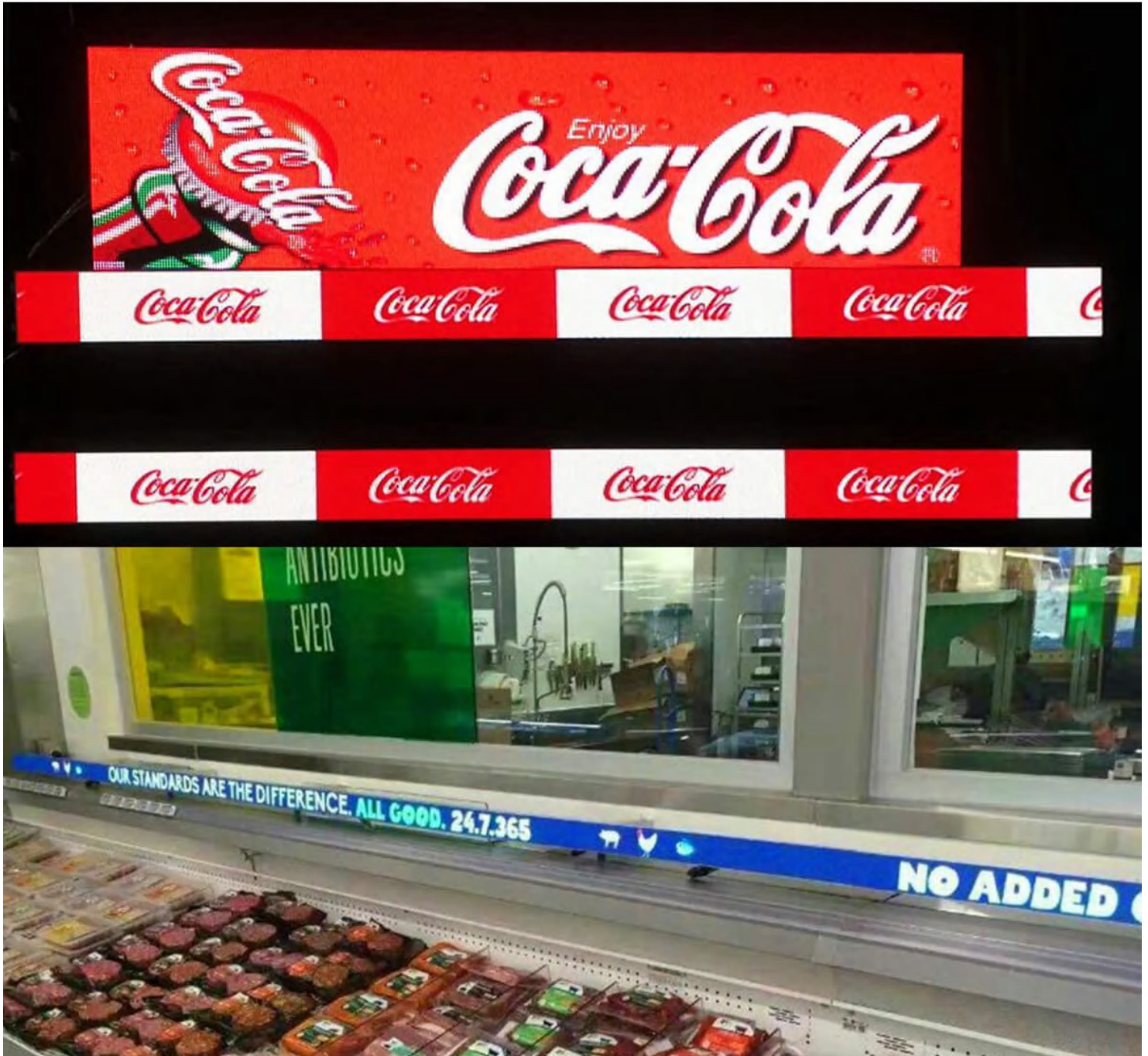


Ultra-thin frame, no waste of space



Application:

suitable for supermarket /store /warehouse shelf screen installation



Case:

LED Shelf Screen P1.25
Display Size: 900x60mm



Technical Parameter

LED Shelf Digital Signage					
Model		S60PRO-P1.25			
LED Module					
1	LED lamp	SMD1010			
2	Pixel pitch	1.25mm			
3	Scan mode	1/48 scan			
4	Resolution (Wx H)	240×48dots			
5	Module size (Wx H)	W.300mm×H.60mm			
6	Surface processor	GOB			
LED Shelf Signage					
1	Displaying(WxH)mm	300×60	600×60	900×60	1200×60
2	Resolution (Wx H)	240×48dots	480X48dots	720X48dots	960X48dots
3	Module arrangement	1×1	2×1	3×1	4×1
4	Max. Power Consumption	9W/PC	18W/PC	27W/PC	36W/PC
5	Avg. Power Consumption	5.5W/PC	8W/PC	12W/PC	16W/PC
6	Whole set size (mm)	305×65×21	605×65×21	905×65×21	1205×65×21
7	Net Weight (KG/PC)	0.4	0.8	1.2	1.6
8	Connection	Seamless splicing, exclusive power connection and universal RJ45 signal communication			
9	Installation	Clip mounted, back-mounted, etc			
Electrical Parameters					
1	Density	640,000 pixels / m²			
2	Brightness	500cd~800cd/m²			
3	View Angle	H,160°/V.160°			
4	Frequency	60frame /s			
5	Refresh rate	3840Hz			
6	Color temperature	3200K-9300K Adjustable			
7	Brightness	By Manual/Auto/software			
8	Control mode	Asynchronous and Synchronous compatible			
9	Working voltage	Input DC24V			
10	Working hours	7×24hrs continously			
11	MTBF	≥10,000Hrs			
12	LED lifetime	≥100,000Hrs			
13	Operation temperature	-20°C ~ 60°C			
14	Operation humidity	10% ~ 90%RH			

Technical Parameter

LED Shelf Digital Signage					
Model		S60PRO-P1.875			
LED Module					
1	LED lamp	SMD1515			
2	Pixel pitch	1.875mm			
3	Scan mode	1/32 scan			
4	Resolution (Wx H)	160×32dots			
5	Module size (Wx H)	W.300mm×H.60mm			
6	Surface processor	GOB			
LED Shelf Signage					
1	Displaying(WxH)mm	300×60	600×60	900×60	1200×60
2	Resolution (Wx H)	160×32dots	320X32dots	480X32dots	640X32dots
3	Module arrangement	1×1	2×1	3×1	4×1
4	Max. Power Consumption	9W/PC	18W/PC	27W/PC	36W/PC
5	Avg. Power Consumption	5.5W/PC	8W/PC	12W/PC	16W/PC
6	Whole set size (mm)	305×65×21	605×65×21	905×65×21	1205×65×21
7	Net Weight (KG/PC)	0.6	1.2	1.8	2.5
8	Connection	Seamless splicing, exclusive power connection and universal RJ45 signal communication			
9	Installation	Clip mounted, back-mounted, etc			
Electrical Parameters					
1	Density	284,444 pixels / m²			
2	Brightness	500cd~800cd/m²			
3	View Angle	H,160°/V.160°			
4	Frequency	60frame /s			
5	Refresh rate	3840Hz			
6	Color temperature	3200K-9300K Adjustable			
7	Brightness	By Manual/Auto/software			
8	Control mode	Asynchronous and Synchronous compatible			
9	Working voltage	Input DC24V			
10	Working hours	7×24hrs continously			
11	MTBF	≥10,000Hrs			
12	LED lifetime	≥100,000Hrs			
13	Operation temperature	-20°C ~ 60°C			
14	Operation humidity	10% ~ 90%RH			